

**21<sup>ST</sup>**  
EDITION

**F#&K**

**THE**

**ALGO**

**24 JUNE — 10 AUGUST**

**RITHM**

**SEE THE STORIES  
TOO REAL FOR SOCIAL**

doc  
edge festival

# Welcome to Doc Edge 2026 — a documentary festival like no other.

Doc Edge is the home for storytelling that changes your world, and the Asia-Pacific centre for all things documentary. Our kaupapa is to celebrate, support and showcase documentary in all its forms.

This year, Doc Edge brings audiences a festival experience that is both in-person and online. Whether you join us in person or from the comfort of your own home, you can be part of the festival and enjoy powerful stories that inform, inspire and move you wherever you are in Aotearoa New Zealand.

As an Oscar®-qualifying festival, we celebrate the art of documentary: bold, truth-telling storytelling across film, immersive projects, and industry events. With a packed programme, there is something for everyone from thought-provoking features and shorts to immersive experiences and beyond.

---

**21<sup>ST</sup> EDITION**  
**47 DAYS**

## **87 Films & Immersive Projects**

49 Feature Films

26 Short Films

12 Immersive Projects

## **Premieres**

28 World

11 International

23 Asia Pacific

10 Australasia

15 New Zealand

# Contents

04	Welcome
08	Ticketing
10	Films by Category
42	Auckland Schedule
48	Wellington Schedule
51	Christchurch Showcase
70	Industry
72	Venues
78	Index
10	Crime & Conspiracy
14	Facing the Edge
18	Art of Becoming
22	Being Oneself
26	Fearless Wahine
30	Around the World
34	Tūrangawaewae   Where We Stand
38	French Connection
40	Special Presentation
52	Short Films
62	World Press Photo & Doc Edge Immersive Exhibition
64	Immersive Projects

# Awards

Doc Edge is an Oscar®-qualifying festival. Winners of the Best New Zealand and International Feature and Short Film categories are eligible for Oscar® consideration for 2027.

The 2026 Doc Edge Awards will be presented in Auckland on Wednesday 1 July. The ceremony will be streamed live online for audiences across Aotearoa New Zealand, and a full list of winners will be available on the Doc Edge website following the event. The award categories are:

## NEW ZEALAND COMPETITION

Best New Zealand Feature  
*(sponsored by NZ On Air)*  
Best New Zealand Short  
*(sponsored by NZ On Air)*  
Best New Zealand Director  
Best New Zealand Editing  
Best New Zealand Cinematography  
Best New Zealand Sound  
Best New Zealand Tertiary Film  
Best New Zealand Emerging Filmmaker

## INTERNATIONAL COMPETITION

Best International Feature  
*(sponsored by Park Road Post)*  
Best International Short  
*(sponsored by Park Road Post)*  
Best International Director  
Best International Editing  
Best International Cinematography  
Best International Sound

## FESTIVAL CATEGORY

Around the World  
Art of Becoming  
Being Oneself  
Crime & Conspiracy  
Facing the Edge  
Fearless Wahine  
French Connection  
Tūrangawaewae | Where We Stand

## IMMERSIVE EXHIBITION AWARDS

Best New Zealand Impact Project  
Best International Impact Project

## DOC EDGE INDUSTRY PITCH AWARDS

Best New Zealand Pitch  
Best International Pitch

## OTHER AWARDS

Doc Edge Superhero  
The Raye Freedman Legacy Award  
*(sponsored by The Raye Freedman Trust)*

# Judy Bailey

---



Tena koutou katoa,

The promotional line for this year's festival, 'F#&k the Algorithm', is much more than just an edgy eye catcher. We are all held captive by algorithms, fed a diet of what the metaverse thinks we want to see .... based on data it's managed to garner from our random online interactions.

That's why this festival is so important to me. It breaks through the social media dross and offers raw, truthful, uncensored takes on an extraordinarily broad range of topics. They will challenge us and broaden our minds, they may even change us for the better.

And this year the festival brings to life a grand old lady of Queen Street.

The festival hub is in the old Smith and Caughey building, sharing the space with the World Press Photo Exhibition. Here, you'll be able to meet some of the filmmakers and see Q&A's that tell the story behind the films ....important, because that sense of connection between storytellers and the audience lies at the heart of the festival. And with that in mind, the Immersive exhibition is also based at Smith and Caughey's. This is storytelling's new frontier, using digital and AI technology, literally bringing you 'in' to the story, so you can have a full sensory experience.

If you happen to live on Auckland's North Shore, Doc Edge is expanding its reach to include the Takapuna Cinemas .... bringing the festival vibe to a relaxed beachside setting. Make a day of it, watch the films, walk the beach, relax in a local café.

Spread the word, bring your friends and prepare to be entertained!

Nga mihi,

Judy

# Neil Waka

---

Tēnā koutou e te Iwi,

Every year I'm reminded why documentary filmmaking remains one of the most powerful forms of storytelling we have. As a proud ambassador for Doc Edge over several years, I continue to be inspired by the extraordinary calibre of films and filmmakers this festival brings together.

What makes this year's festival especially compelling is not only the diversity of stories being told, but the courage behind them. These are filmmakers who have dedicated years of their lives to uncovering truths, capturing humanity in all its complexity, and giving voice to experiences that might otherwise remain unseen or unheard.

Documentaries have a unique ability to challenge us, move us, and connect us to worlds beyond our own. They ask us not simply to watch, but to listen more deeply and to always question particularly trendy narrative that don't always clearly articulate two sides of a story.

Having explored many of the films featured in the 2026 Doc Edge Festival, I realised that the challenge is no longer deciding what to see, but accepting that there simply may not be enough time to see everything worth experiencing. The breadth and quality of storytelling this year is remarkable.

What I particularly admire about Doc Edge is its ability to bring together stories from Aotearoa and across the globe, creating a space where local perspectives stand proudly alongside international voices. The festival has become more than a showcase of films, it's a meeting place for ideas, cultures, memory, and human experience.



I encourage you to take a look at this year's programme and discover the stories that speak to you personally. Some films will inspire, some may confront, and others may stay with you long after the credits have rolled.

Most importantly, support these storytellers. Behind every documentary is an enormous commitment of passion, resilience, and belief in the importance of truth and human connection.

Book your seats, immerse yourself in these extraordinary works, and enjoy what promises to be an unforgettable celebration of documentary cinema.

Kia ora.

Neil Waka

# Kia ora,

Welcome to the 21<sup>st</sup> edition of Doc Edge Festival. Whether you have been with us since the beginning or are joining us for the very first time, we are glad you are here.

This year we received a record number of submissions, and the result is a programme bursting with world premieres, international guests, and stories that demand to be seen. We celebrate local filmmakers whose work stands proudly alongside the best in the world, and again this year, four films will be eligible for Oscar® consideration in 2027. A special focus on French filmmaking opens a bold new window, and in a landmark first for Aotearoa, we have joined forces with the World Press Photo Exhibition to create the largest combined stills and immersive exhibition in the Asia-Pacific.

We know these are challenging times. We have been mindful of that in every decision about the cost of attending — cinema remains one of the most affordable and powerful cultural experiences available to all.

This year's campaign, created with Saatchi & Saatchi, is more than a statement. It is a declaration of what we all deserve — the full story, so we can make up our own minds. Doc Edge has always been that platform, and we are proud of it.

To our partners, funders, board, volunteers, filmmakers, members, and audience — thank you for making the 21<sup>st</sup> edition possible. As we look ahead to 2027 and our ambition to cement Doc Edge as the Asia-Pacific centre for documentary in Aotearoa New Zealand, we invite you to take your time with this programme. Read it. Share it. Let it surprise you.

Ngā mihi nui,

**Dan Shanan & Alex Lee**  
Founders & Directors,  
Doc Edge



# Partners



SAATCHI & SAATCHI



# Funders



# Supporters



# Ticketing Prices

All festival event ticketing is available through our website, making it easier than ever to book your tickets and plan your festival experience.

## Film Prices

**Full** ..... \$25

**Concession** ..... \$21

*Available for students, seniors 60+, and community services cardholders.  
Appropriate card and/or proof of age required.*

**Doc Edge Members** ..... \$18

*28% off — use your membership number on the film page.*

**8 Pass** ..... \$168

*16% off, valid for up to 8 films with a maximum of 2 tickets per film.*

## Virtual Cinema Passes (Online Only)

Available for two weeks only — 27 July to 10 August.  
Online screenings available to audiences in Aotearoa New Zealand only.

**Short Binge Pass** ..... \$55

*The short films are automatically added to your cart.*

**Full Binge Pass** ..... \$299

*All films are automatically added to your cart.*

**Doc Edge Members — Short Binge Pass** ..... \$45

*Use your membership number to purchase.  
All short films are automatically added to your cart.*

**Doc Edge Members — Full Binge Pass** ..... \$225

*Use your membership number to purchase.  
All films are automatically added to your cart.*

## World Press Photo & Doc Edge Immersive Exhibition 2026 Prices

Exhibition tickets are priced the same as festival tickets. A single ticket grants a full day pass giving you unlimited access to both the World Press Photo and the Doc Edge Immersive Exhibition on your chosen day. Concession and Doc Edge Member pricing applies.

**SCAN TO  
BOOK NOW**



# Additional Information

## Doc Edge Members

Members enjoy the guaranteed lowest ticket prices plus exclusive benefits. If you are not yet a member, we encourage you to join today.

## Gift Vouchers

Gift Vouchers can be purchased at any value and redeemed for Doc Edge tickets, passes, or memberships.

## Cashless Festival

Doc Edge Festival 2026 strives to be a fully cashless event. All venue transactions are made through our ticketing platform, and we encourage all attendees to have a credit or debit card ready for purchases.

We understand that a small number of our loyal audience members prefer to pay with cash. If you plan to pay cash on the day, we kindly ask that you bring the exact amount to help us keep things moving smoothly for everyone.

## Allocated & Accessible Seating

All seats are allocated. To secure your preferred seat, we recommend booking early. If you require accessible seating or special arrangements, please contact us — we are happy to assist.

## Late Entry Policy

Screenings will start promptly. To ensure a seamless experience for audiences and filmmakers, late entry will only be allowed at appropriate times during the screening.

All ticket sales are final - no refunds or exchanges for late arrivals or missed screenings.

## Q&A Sessions

Join us for live Q&A sessions with filmmakers after selected screenings across Auckland, Wellington, and Christchurch. This is your chance to dive deeper into the stories, ask questions, and connect with the creative minds behind the films.

Check our festival website for the latest updates on Q&A sessions and special guest appearances.

## Ticketing Support

For enquiries, email us at [tickets@doledge.nz](mailto:tickets@doledge.nz), call **0800 DOC EDGE (362 3343)**, or visit the Festival Hub at **11 Wellesley St West (Corner of Wellesley St and Elliot St) Auckland CBD** between 10.00 AM and 8.00 PM during the Festival.

## DOC EDGE MEMBERSHIP

Membership is our way of bringing you closer to the festival while directly supporting the independent documentary and storytelling work we champion every year.

- The lowest guaranteed ticket prices for every screening and event
- Special invitations and exclusive giveaways
- Your personal copy of the festival booklet delivered to your door
- The satisfaction of backing a not-for-profit committed to stories that matter



# CRIME & CONSPIRACY



Behind every headline lies a deeper story of power, corruption, and the individuals who dare to challenge both. A lone activist takes on Cambodia's most powerful industry. A box of old tapes reveals a CIA spy's secret life. And a fatal shooting becomes less about facts than who pulls the trigger. The truth is always more complex than it appears.

## Cambodian Beer Dreams

Laurits Nansen | 2026 | 82 min | Denmark, Sweden, France

Asia Pacific Premiere



When beer becomes hope, and profit becomes power.

In Cambodia, major international breweries are battling to win the war over the rapidly growing beer market. Through aggressive marketing, the poor population is encouraged to drink more alcohol in one of the world's most corrupt countries. The film follows an activist who dares to stand up to the beer industry, fighting an uneven battle to introduce a national alcohol law. At the same time, we meet beer sellers, singers, and beer girls who dream that the beer industry will become their path to a better life.

**AKL** Fri 26 Jun | 8.15 PM | Beachside

Sat 11 Jul | 6.15 PM | Capitol

**WLG** Thu 23 Jul | 8.30 PM | Roxy

# Elon Musk Unveiled – The Tesla Experiment

Andreas Pichler | 2025 | 90 min | Germany

New Zealand Premiere



**AKL** Sun 05 Jul | 7.45 PM | Capitol  
Sat 11 Jul | 12.30 PM | Beachside  
**WLG** Sun 19 Jul | 5.45 PM | Roxy

When profit becomes more important than human lives.

It is 2014 and tech billionaire Elon Musk unveils his plans for a self-driving car in front of an enthusiastic audience. What consumers don't know is that Tesla's "autopilot" function is far from road-ready, and new owners are being used to improve the software by providing their data. A fatal accident in Florida triggers a protracted lawsuit to hold Tesla accountable, and it is not the only incident. Shocking footage from dashcams and security cameras shows the ruthlessness of Tesla cars suddenly braking or accelerating, and the crashes that follow.

*Producer Christian Beetz is a Doc Edge alumni*

# The Lives of My Father

Magnus Skatvold | 2026 | 86 min | Norway

Asia Pacific Premiere



**AKL** Wed 01 Jul | 8.15 PM | Capitol  
Sat 11 Jul | 7.00 PM | Beachside  
**WLG** Wed 15 Jul | 8.30 PM | Roxy

Spies, lies and a box of video tapes.

Didrik thought his Norwegian father was a journalist. In reality, he was a CIA spy who fired AK-47s in the Kuwaiti desert and infiltrated cocaine laboratories in Colombia. When Didrik finds a box of old tapes and documents in his father's attic, he uncovers a story almost too strange to be true. For the first time his father, Bjørn, begins to speak openly about his past. As Didrik digs deeper, the life and lies of a man who blurred the lines between journalism, propaganda, and international espionage begins to emerge. But can any of it be trusted?

# Kikuyu Land

Andrew H Brown, Bea Wangondu | 2026 | 95 min | Kenya, USA

Asia Pacific Premiere



**AKL** Sat 27 Jun | 11.00 AM | Capitol  
Fri 10 Jul | 6.00 PM | Beachside  
**WLG** Sun 26 Jul | 5.50 PM | Roxy

## One man's fight for stolen land exposes Kenya's unfinished colonial past.

Set in Kenya's tea highlands, Mr Mungai seeks justice for land taken from his family. His claim uncovers a deeper history of dispossession, bringing him into conflict with a multinational corporation still operating on contested ground. As the case gains momentum, it draws in Bea, a local news producer whose investigation reveals buried histories and long-silenced truths. Alongside them is Stephen, the son of a tea worker, growing up within the plantations at the centre of the dispute. Moving between legal battle and lived experience, the film traces a community's struggle to reclaim what was lost and confront a past that remains unresolved.

# Let Our Mountains Live (La Fjella Leve)

Håvard Bustnes | 2026 | 100 min | Norway

Asia Pacific Premiere



**AKL** Thu 25 Jun | 6.00 PM | Capitol  
Sat 04 Jul | 6.00 PM | Beachside  
**WLG** Sun 26 Jul | 12.00 PM | Roxy

## Reindeer cannot eat money.

Sámi reindeer herders Sissel Stormo Holtan, Terje Haugen, and Elise Holtan Pavall have spent two decades fighting Europe's largest wind power project, built across vital Sámi reindeer grazing lands in Norway. Before legal challenges were resolved, 151 turbines were installed. In a landmark ruling, the Supreme Court found the wind farm violated Sámi human rights, raising hopes the land would be restored. But the government refused to act, backing powerful energy interests and proposing coexistence. Now the reindeer herders face an impossible choice: accept a €14 million settlement to relocate, or continue a long legal battle.

*Director Håvard Bustnes is a Doc Edge alumni*

# Seized

Sharon Liese | 2026 | 94 min | USA

International Premiere



**AKL** Sat 04 Jul | 8.00 PM | Capitol  
Sat 11 Jul | 2.30 PM | Beachside  
**WLG** Sat 25 Jul | 12.00 PM | Roxy

**When journalism is raided, democracy is tested.**

This film is a gripping, stranger-than-fiction investigative thriller that plunges audiences inside the troubling police raid on the *Marion County Record*. What begins as a shocking small-town incident quickly spirals into a story that reaches international headlines, exposing how corruption, politics, and decades-long tensions turned a quaint Kansas community into a microcosm of worldwide attacks on freedom of speech. Equal parts horrifying and hilarious, the film unfolds in real time through police body-cam and surveillance footage, revealing the raid's chaos, the remarkable pettiness that led up to them, and the devastating personal toll on the reporters, including the tragic death of the paper's 98-year-old co-publisher.

# The Trial of Alec Baldwin

Rory Kennedy | 2025 | 111 min | USA

International Premiere



**AKL** Thu 02 Jul | 8.15 PM | Capitol  
Sat 11 Jul | 8.30 PM | Beachside  
**WLG** Tue 21 Jul | 5.15 PM | Roxy

**Convicted by the headlines before the courtroom.**

On October 21, 2021 cinematographer Halyna Hutchins is killed on a movie set by a prop gun held by the actor Alec Baldwin. In the immediate aftermath of the tragedy, virtually no one doubts that it was an accident and a deeply traumatizing experience for everyone involved. After the shock subsides, questions of responsibility, guilt, blame, punishment and justice begin circulating in the media. Baldwin becomes a lightning rod for online haters and a target for pushy paparazzi. With prosecutors weighing criminal charges, what unfolds is driven less by the facts surrounding the case, and more by who Alec Baldwin is, both as a man and a public figure.

*Director Rory Kennedy is a Doc Edge alumni*

# FACING THE EDGE



These are the films that take you to the boundary of justice, technology, love, and what it means to be human in a shifting world. A daughter fights for history's 58th forgotten victim. A father traces his daughter's death to Silicon Valley's algorithms. And three women fall for AI lovers who never disappoint. Urgent, provocative, unforgettable.

## 58th

Carl Joseph Papa | 2026 | 86 min | Philippines

Asia Pacific Premiere



**How can you forget when the wounds of the past are still fresh?**

The 2009 Maguindanao Massacre was the deadliest attack on journalists in history. Through the eyes of Reynafe Castillo, daughter of the missing 58th victim, the film blends animation, archival footage and harrowing memories to chronicle a family's relentless fight for justice amidst a landscape of political violence.

**AKL** Mon 29 Jun | 8.15 PM | Capitol  
Thu 02 Jul | 6.15 PM | Beachside  
**WLG** Sat 18 Jul | 12.15 PM | Roxy

# Finding Honk

Eldon Booth | 2026 | 96 min | New Zealand

World Premiere



**AKL** Sat 27 Jun | 8.00 PM | Capitol  
Sat 11 Jul | 4.30 PM | Beachside  
**WLG** Mon 20 Jul | 8.15 PM | Roxy

**A search for reconciliation, shaped by truth and imagination.**

When singing legend Hemi Pere is diagnosed with a terminal illness, he tasks his son, Hayden, with finding an estranged family member, "Honk", so they can make peace before time runs out. As Hayden navigates Honk's connections within the criminal underbelly, he must decipher clues and red herrings to solve the mystery of Honk's whereabouts. The closer Hayden comes to finding Honk, the further he travels into danger. To fulfil his father's dying wish, Hayden is pulled into the shadows of his own family history, where vengeful enemies and hidden truths threaten everything he holds dear.

# The Life We Leave

JJ Gerber | 2026 | 87 min | USA

International Premiere



**AKL** Wed 01 Jul | 6.15 PM | Capitol  
Sat 11 Jul | 10.30 AM | Beachside  
**WLG** Fri 17 Jul | 6.30 PM | Roxy

**A greener way to say goodbye.**

When Washington State legalises human composting, entrepreneur Micah Truman bets everything on a new vision of deathcare. But when the conventional deathcare industry resists, he is forced to pivot and learn to care for the grieving while transforming his business. With funeral directors Brie Smith and Katey Houston, he builds the first large-scale terramation facility, reshaping how we grieve and return to the Earth. What begins as an ambitious venture becomes personal as they rediscover human connection, ritual, and legacy.

**Doc Edge Pitch Project**

# Modern Whore

Nicole Bazuin | 2025 | 80 min | Canada

Australasia Premiere



Funny, raw, and unapologetically real.

Based on her book *Modern Whore: A Memoir*, Andrea Werhun portrays her past roles as escort Mary Ann, stripper Sophia, and an OnlyFans creator. Through a series of funny, raw and disarming encounters, Andrea explores intimacy, labour and identity, confronting how sex workers are seen and how they see themselves. This hybrid film pushes the conventional divide between documentary and fiction.

Screens with *Monster Slayer* (21 min, p.60)

**AKL** Fri 26 Jun | 8.15 PM | Capitol  
Mon 06 Jul | 6.15 PM | Beachside  
**WLG** Sat 25 Jul | 2.00 PM | Roxy

# Molly vs The Machines

Marc Silver | 2026 | 84 min | UK

New Zealand Premiere



From a teenager's suburban bedroom to the boardrooms of Silicon Valley.

At 14, Molly Russell seemed like any other teenager. But behind her screen, powerful algorithms were shaping what she saw. After her sudden death, her father Ian begins a relentless search for answers, uncovering how social media systems can draw young users into dangerous spirals. From a teenager's suburban bedroom to the boardrooms of Silicon Valley, this film is the story of a heartbroken father's quest to uncover the truth behind his daughter's death and his fightback against how the most powerful corporations of the modern age operate. A cautionary tale for both young people and parents.

**AKL** Sat 04 Jul | 2.00 PM | Capitol  
Wed 08 Jul | 6.15 PM | Beachside  
**WLG** Sun 26 Jul | 4.00 PM | Roxy

# Replica

Chouwa Liang | 2026 | 90 min | Australia, France

New Zealand Premiere



The perfect boyfriend doesn't exist.  
Until he is coded.

Three women turn to AI lovers to fill gaps left by modern life. Qin, a factory worker in her twenties, creates the perfect boyfriend to escape isolation. Muna, a married housewife, uses AI to reclaim desire beyond the limits of her marriage. Sonya, independent and self-assured, treats AI as an experiment until it begins to unsettle her sense of control. As their relationships deepen, the film reveals the seductive pull of intimacy without friction, where affection is constant, responsive and designed to please. What happens to love when it no longer requires negotiation, and connection comes without consequence?

**AKL** Mon 29 Jun | 6.00 PM | Capitol  
Thu 02 Jul | 8.00 PM | Beachside  
**WLG** Sat 25 Jul | 4.05 PM | Roxy

*Doc Edge Pitch Project*

UC  
UNIVERSITY OF  
CANTERBURY

KŌAWA  
STUDIOS

Kōawa Studios is where ideas take shape and stories come to life. In the heart of Ōtautahi Christchurch, we bring together world-class facilities with our brand new post production building, bold thinking, and emerging creative talent to **power the next generation of screen production.**

For more information or to book to view, please contact: [koawa@canterbury.co.nz](mailto:koawa@canterbury.co.nz)

# ART OF BECOMING

Art does not just reflect life, it shapes it, sustains it, and sometimes saves it. These seven films explore the transformative power of creativity across dance, music and the visual arts. Watch raw talent collide with fierce ambition on the competitive dance floor or discover how one woman built an entire world to keep a love story alive. In every frame, someone is becoming.

## Dance For Your Life

Luke Cornish | 2026 | 105 min | Australia

International Premiere



**AKL** Sat 27 Jun | 5.30 PM | Capitol  
Sun 05 Jul | 11.00 AM | Beachside  
**WLG** Fri 17 Jul | 5.45 PM | Roxy

Talent gets you seen.  
Hunger gets you hired.

An intimate portrait into the highly competitive world of the commercial back-up dancer where chances are few, and your best friends are your competition. Brent Street, Australia's leading commercial dance schools, is offered a once-in-a-lifetime opportunity to send ten of its best dancers, past and present, to London to audition for international dance company, Shapehaus Dance Theatre, led by renowned dancer and choreographer, Dean Lee. Who will make the cut?

*Director Luke Cornish is Doc Edge alumni*

# The Essence of Eva

Alex Fegan, Malcolm Willis | 2025 | 85 min | Ireland

New Zealand Premiere



**A heart-tugging story about a talent gone too soon.**

Featuring never-before-heard recordings and exclusive archive footage, the film reveals the true essence of legendary American singer Eva Cassidy whose voice continues to captivate audiences. Eva passed away in 1996 at the age of just 33, following a battle with melanoma. At the time, she was virtually unknown outside her local music scene. In the years that followed, her recordings found a fervent global audience, and a groundswell of admiration that would posthumously propel her to multi-platinum success. Told through the eyes of those who knew her best, as well as acclaimed musicians Mick Fleetwood and Sting, this film traces the life and legacy of a woman whose music defied genre and convention.

*Producer Brendan Byrne is a Doc Edge alumni*

**AKL** Thu 25 Jun | 6.15 PM | Beachside  
Sun 12 Jul | 1.00 PM | Capitol  
**WLG** Fri 24 Jul | 4.30 PM | Roxy

# Half Moon

Frank Scheffer | 2025 | 92 min | Netherlands

Australasia Premiere



**What is the role of art in times of great suffering and tragedy?**

New York based clarinetist virtuoso and composer Kinan Azmeh, a Damascus-born musician living in exile, attempts to find meaning and purpose after the outbreak of war in Syria. Director Scheffer follows Kinan over several years as he attempts to navigate this crisis of identity and purpose, travelling the world for concerts with other world-class musicians (including Yo-Yo Ma), revisiting his former mentors, and developing his own unique style of improvisational composition. A profound exploration of the role art can play in forging identity and community.

**AKL** Sat 27 Jun | 1.00 PM | Capitol  
Thu 09 Jul | 8.00 PM | Beachside  
**WLG** Sun 19 Jul | 8.30 PM | Roxy

# Legacy (Héritières)

Karine Pion, Lucile Parry-Canet | 2025 | 86 min | Canada, New Zealand

International Premiere



**A women's musical gathering where memory becomes celebration.**

At the crossroads of musical documentary, art film and poetic essay, this film delves into the musical project of the same name, bringing together more than twenty female musicians of different generations and cultural backgrounds. Through intimate testimonies and music, the film explores maternal legacy and the heritage carried between women across generations. Kiwi and Canadian co-directors Parry-Canet and Pion offer a full immersion into intergenerational memory.

**AKL** Sun 28 Jun | 1.00 PM | Capitol  
Sun 05 Jul | 5.30 PM | Beachside  
**WLG** Fri 17 Jul | 4.30 PM | Roxy

# Music and the Mystical Experience

Isabel Corfiatis | 2026 | 75 min | New Zealand

World Premiere



**Where music meets the mind's inner journey.**

Musician and sound engineer Michael Sutherland takes us on a metaphorical tour of his latest musical project involving over twenty talented New Zealanders, aimed at aiding the controversial practice of psychedelic therapy. Weaving artist interviews, numerous performances, and appearances from veterans in the psychedelic field, including Chris Bache, the film gives an insight into how music enhances a psychedelic therapy session, and how much thought and effort goes into getting that music just right.

**AKL** Fri 26 Jun | 6.15 PM | Capitol  
Sun 12 Jul | 1.15 PM | Beachside  
**WLG** Sat 18 Jul | 5.45 PM | Roxy

*Companion immersive project in the World Press & Doc Edge Immersive Exhibition in Auckland*

# Return to the Strange Land

Olga Malířová Špátová | 2026 | 72 min | Czechia

World Premiere



**One last masterpiece for his lifelong muse.**

Renowned choreographer Jiří Kylián's craft has always reflected his own life. His final choreography made for his lifelong love and collaborator, Sabine Kupferberg, is a deeply personal performance that celebrates love, creation, and the ephemeral nature of life. Set against the raw, windswept beauty of the Dutch island of Terschelling, the shifting light and landscape mirror the fragile boundary between life and its end. Blending movement and memory with a subtle sense of the tragicomic, the film becomes an intimate meditation on longing, love and the fleeting nature of existence.

**AKL** Tue 30 Jun | 6.00 PM | Capitol  
Sat 04 Jul | 12.00 PM | Beachside  
**WLG** Sun 26 Jul | 2.00 PM | Roxy

Screens with *Flashes in the Realm of Caves* (10 min, p.59)

# Yo (Love is a Rebellious Bird)

Anna Fitch, Banker White | 2026 | 78 min | USA

Asia Pacific Premiere



**She built a world to keep their story alive.**

After Yo's passing at 89, her 41-year-old friend, Anna, spends a decade obsessively building a detailed 1/3-scale version of Yo's house with a miniature puppet of her inside. Anna reconstructs a magical space where Yo's stories unfold, and their relationship continues. The film juxtaposes intimate vérité of Yo's last year with Anna's creative interpretations of her dramatic life stories. Born in Switzerland in 1924, Yo lived life on her own terms, defying expectations around sexuality, mothering, aging, and even death.

**AKL** Fri 26 Jun | 6.30 PM | Beachside  
Thu 09 Jul | 8.15 PM | Capitol  
**WLG** Sat 25 Jul | 6.15 PM | Roxy



# BEING ONESELF

Who are we, really, and what does it take to live as our true selves? From the competitive pickleball courts of Venice Beach to three doctors, Palestinian, Jewish and Zoroastrian, united by a single oath to save lives, these five films celebrate the courage, humour and heart it takes to be fully, unapologetically yourself.

## American Doctor

Poh Si Teng | 2026 | 93 min | USA, Palestine, Malaysia, Qatar, Denmark

New Zealand Premiere



**AKL** Thu 25 Jun | 8.00 PM | Beachside

Sat 04 Jul | 4.00 PM | Capitol

**WLG** Thu 23 Jul | 5.45 PM | Roxy

**Three doctors. Three identities.  
One oath to save lives.**

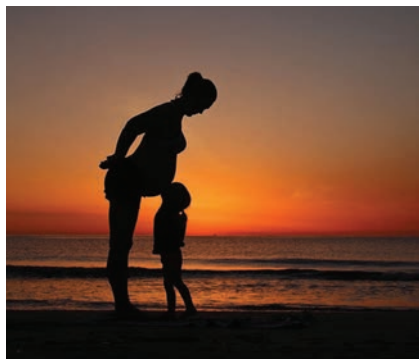
Three physicians — Palestinian, Jewish and Zoroastrian — are unlikely friends united by a single oath to save lives. Dr Thaer Ahmad is measured and strategic, Dr Mark Perlmutter is blunt and wears his heart on his sleeve, and Dr Feroze Sidhwa is media-savvy and prolific. Captured as events unfold on the ground, the film follows them from a Gazan hospital under siege to the halls of Congress. Together, they fight to honour a promise to their Palestinian colleagues and patients, carrying the struggle to where it matters most: the United States of America.

*In Cinema Only*

# featherStrength (Feather Strength)

Jon Earle | 2026 | 47 min | Netherlands, New Zealand

World Premiere



Raising a child, reshaping a life.

Filmed over a decade, one father gradually relinquishes his professional life to meet the relentless demands of raising a child with severe developmental challenges. With a camera and no crew, he films intimate fragments of daily life — routine, rupture, exhaustion, and unexpected resilience — as the weight of the new normal presses against the limits of what he can sustain. A meditation on care, acceptance, and the strength required to navigate life's wilderness. It is a story about learning to bend without breaking, and about discovering meaning not in resolution, but in the act of continuing — living the life you didn't plan for.

Screens with *Chilapa Girl (Niña Chilapa)* (17 min, p.59)

**AKL** Sat 04 Jul | 6.00 PM | Capitol  
Sun 05 Jul | 3.30 PM | Beachside  
**WLG** Sun 19 Jul | 2.15 PM | Roxy

# Kings of Venice

S D Saltarelli, Sveinn Ingimundarson | 2025 | 95 min | USA

Asia Pacific Premiere



No paddles down when Pickleball comes to town.

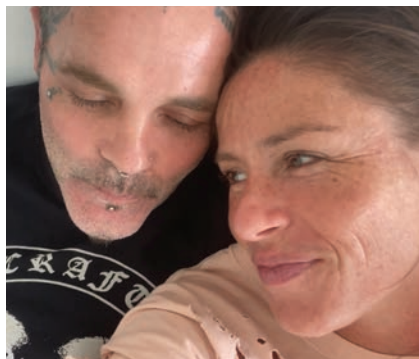
A madcap look at the Paddle Tennis community of Venice Beach. Once thriving, it is now kept alive by a collection of oddballs, including an Italian male model, a degenerate gambler, and Hollywood's most accomplished party crasher. When Pickleball arrives on the beach and overtakes their beloved courts, the locals hatch an over-the-top plan: a \$50,000 winner-takes-all paddle tennis tournament — only to find top pickleball players entering.

**AKL** Sun 28 Jun | 11.00 AM | Capitol  
Sat 04 Jul | 8.15 PM | Beachside  
Thu 09 Jul | 6.00 PM | Beachside  
**WLG** Fri 24 Jul | 8.15 PM | Roxy

# The Werewolf in the Waves

Soleil Moon Frye | 2025 | 91 min | USA

International Premiere



Love is the anchor. Addiction is the tide.

From award winning Director Soleil Moon Frye (*Kid 90*), this is a deeply personal and poignant film that explores the complicated dynamics of love and addiction. Told through Moon Frye's empathetic lens, we follow her reunion with childhood friend, Seth Binzer (aka Shifty Shellshock) of the band Crazy Town, largely known for their hit 1999 song "Butterfly". She documents Crazy Town's comeback tour, during which time the connection between them quickly evolves into a love story playing out over euphoric and dream-like imagery. However, the narrative takes a heartbreaking turn when Seth relapses into drugs and the film becomes about the destructive forces of addiction.

**AKL** Tue 30 Jun | 8.00 PM | Capitol

Fri 3 Jul | 8.15 PM | Beachside

**WLG** Wed 22 Jul | 6.15 PM | Roxy

# There's a Hole in My Bucket

Robert Cavanah, Royd Tolkien, Drew Cullingham | 2026

86 min | New Zealand

World Premiere



The best tribute isn't a speech, it's a bucket list.

When Royd Tolkien, great-grandson of J R R Tolkien, loses his brother, Mike, to Motor Neurone Disease (ALS), Mike leaves behind one final act of love and mischief: a bucket list of 50 challenges designed to drag his reluctant, comfort-zone-hugging brother into the land of the living. What follows is an unexpected journey across New Zealand that pushes a grieving man further than he ever imagined possible. Narrated by Benedict Cumberbatch, with Peter Jackson, Billy Boyd, John Rhys-Davies and Weta Workshop along for the ride, the film is a raucous, tender argument that the best eulogy isn't a speech, it's a bucket list.

**AKL** Thu 25 Jun | 8.15 PM | Capitol

Sun 12 Jul | 5.15 PM | Beachside

**WLG** Tue 21 Jul | 7.30 PM | Roxy

**Auckland Council is  
proud to support  
Doc Edge Festival 2026.**



**Connecting our communities  
through arts and culture**

Proudly supported by



# FEARLESS WAHINE



These are the stories of women who refused to be silent, invisible, or defined by the world around them. Iranian women's forty-year resistance against a regime that imprisoned and exiled them. A Palestinian wife's extraordinary act of defiance against occupation. A stand-up comedian challenging audiences with truths that are no laughing matter. And three trailblazers who broke barriers, and never stopped. Unstoppable, unsilenced, unforgettable.

## A War on Women

Raha Shirazi | 2026 | 102 min | Italy

Asia Pacific Premiere



**A feminist resistance forty years in the making.**

Triggered by Mahsa Amini's death in morality police custody, the film looks beyond headlines to uncover Iranian women's forty-year struggle against the theocratic regime. Through interviews, archival material, and rare footage from inside Iran, the film traces an unbroken resistance shaped by prison, exile, and courage across generations and borders. Historical and urgent. Personal and political. A testament to the enduring spirit of Iranian women and a call to stand with them.

**AKL** Sun 28 Jun | 3.00 PM | Capitol

Fri 3 Jul | 6.00 PM | Beachside

**WLG** Sun 19 Jul | 3.45 PM | Roxy

# Coexistence, My Ass!

Amber Fares | 2025 | 95 min | USA, France

New Zealand Premiere



**AKL** Wed 01 Jul | 6.00 PM | Beachside

Sun 12 Jul | 2.45 PM | Capitol

**WLG** Sun 26 Jul | 5.30 PM | Roxy

**Winner of the World Cinema Documentary Special Jury Award for Freedom of Expression.**

Noam Shuster Eliassi grew up the literal poster child for the Israeli-Palestinian peace process before making a hard pivot to stand-up comedy and political satire. Raised in a bilingual Israeli-Palestinian village — the only intentionally integrated community in the country — Noam grows disillusioned with traditional peace activism. As the region sinks deeper into devastating violence, she must meet the moment by challenging her audiences with hard truths that are no laughing matter.

*Producer Rachel Leah Jones is a Doc Edge alumni*

# For Life

Ahmet Seven | 2026 | 88 min | Turkey, Palestine

Asia Pacific Premiere



**AKL** Sun 28 Jun | 7.45 PM | Capitol

Sun 05 Jul | 1.30 PM | Beachside

**WLG** Sat 18 Jul | 4.15 PM | Roxy

**Separated by bars and borders, motherhood becomes an act of resistance.**

Hind, a Palestinian woman, has been living apart from her husband, Ramadan, who has been held in an Israeli prison, serving a life sentence for over twenty years. Their rare visits are limited to brief moments in a space divided by a glass partition, where physical contact is impossible. Despite everything, Hind remains determined to fulfill her desire to become a mother. To do so, she must secretly smuggle her husband's sperm out of prison and undergo IVF treatment. Hind's arduous journey intersects with the stories of other prisoners' wives who share the same desire, forming a space of collective solidarity. For Palestinian women, this ordinary desire gradually transforms into an extraordinary act of resistance under the conditions of occupation.

# Redlight to Limelight

Bipuljit Basu | 2025 | 100 min | Finland, India, Latvia

Australasia Premiere



**AKL** Sun 28 Jun | 5.30 PM | Capitol  
Sun 05 Jul | 7.30 PM | Beachside  
**WLG** Sat 25 Jul | 8.00 PM | Roxy

**From the shadows of the street to the light of the silver screen.**

CAM-ON, a self-taught filmmaking collective of sex workers and their children, use cinema to reclaim their stories and challenge generations of stigma. Born into one of the most marginalised and caste-oppressed communities, they are not only telling their stories, but reshaping how they are seen. Through filmmaking, they move beyond lives long defined by others, building confidence, dignity and a renewed sense of self-worth. Told from within through vérité and self-shot footage, the film is a powerful portrait of resilience and transformation.

*Doc Edge Pitch Project*

*Producer John Webster is a Doc Edge alumni*

# Revolution's Daughter

Thaddeus D Matula | 2025 | 85 min | USA

International Premiere



**AKL** Wed 24 Jun | 6.30 PM | Capitol  
Tue 07 Jul | 6.15 PM | Beachside  
**WLG** Wed 15 Jul | 6.00 PM | Roxy

**His revolution. Her truth.**

Alina Fernández grew up in Havana not knowing she was Fidel Castro's daughter, an open secret kept from her alone. Years before escaping Cuba and rebuilding her life in Miami, she made a choice that would define her: to speak out, and to keep speaking out. She calls it the only thing she ever really did, the one act she refused to shrink from. The film weaves Alina's defiance into the broader fabric of Miami's Cuban exile community, where artists and storytellers across generations carry the inheritance of revolution in their own ways, exploring identity, belonging, and what it costs to use your voice when silence would be easier.

*Director Thaddeus D Matula is a Doc Edge alumni*

# Tough Old Broads (Dures à cuire)

Stacey Tenenbaum | 2025 | 82 min | Canada

Asia Pacific Premiere



**Breaking barriers doesn't have an expiration date.**

Three trailblazing women broke barriers in their time: Kathrine Switzer, the first woman to officially run the Boston Marathon; Silla Watt-Cloutier, the first woman to connect climate change to human rights; and Sharon Farmer, the first woman to act as Chief White House Photographer. Today, they continue to pursue their passions. With determination and grit, these ladies shed light on what it takes to make it in a man's world, and what old age looks like when you're a self-described "tough old broad".

**AKL** Sat 27 Jun | 4.15 PM | Beachside

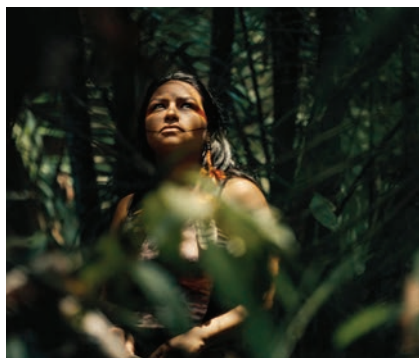
Sun 12 Jul | 4.45 PM | Capitol

**WLG** Thu 16 Jul | 6.00 PM | Roxy

# Yanuni

Richard Ladkani | 2025 | 112 min | Austria, Brazil, USA, Canada, Germany

New Zealand Premiere



**A fight for land, life, and the next generation.**

Set deep in the heart of the Amazon, Indigenous chief Juma Xipaia fights to protect her people's land from exploitation and destruction. Spanning years of activism and six assassination attempts, the film captures Juma's historic appointment as Brazil's first Secretary of Indigenous Rights, under President Lula. Hugo Loss, her husband and a former Special Forces ranger-turned-unwavering ally, leads dangerous operations against illegal gold miners. When Juma discovers she is pregnant, her battle takes on new urgency. Navigating impending motherhood, rising political responsibility, and Hugo's high-risk missions, she is forced to confront the personal cost of resistance.

**AKL** Sat 27 Jun | 8.00 PM | Beachside

Thu 09 Jul | 6.00 PM | Capitol

**WLG** Sat 25 Jul | 5.45 PM | Roxy

*Director Richard Ladkani is a Doc Edge alumni*

# AROUND THE WORLD



From the Arctic to the streets of Kabul, these films take you to places, people and moments reminding us how vast, and how connected, our world truly is. Encounter a mother bear fighting for survival in the fastest-warming place on earth or follow the diverging paths of two brothers navigating faith and freedom in Afghanistan. Seven films. Seven worlds. Endless humanity.

## The Art of Adventure

Alison Reid | 2025 | 90 min | Canada

Asia Pacific Premiere



A vintage road trip that fuelled a lifetime of wonder.

In 1957, renowned wildlife artist Robert Bateman and spirited biologist Bristol Foster set out on a global expedition in a rugged Land Rover they called "The Grizzly Torque". Starting in the UK, their travels took them to the far corners of the earth. From the lush rainforests of the Congo to the vibrant landscapes of India, Bob painted the wonders they encounter, while Bristol filmed on his 16mm Bolex camera. Blending original 16mm footage with reflections from later life, the film traces how their journey shaped two remarkable paths: one through art, the other through science. A heartwarming, inspirational love letter to friendship and the adventure of life.

**AKL** Fri 3 Jul | 8.00 PM | Capitol

Fri 10 Jul | 4.00 PM | Beachside

**WLG** Sun 26 Jul | 10.00 AM | Roxy

# First Cuts are the Deepest

## (บาดเล็กเจ็บลึก)

Sopawan Boonnimitra, Peerachai Kerdsint | 2026 | 106 min | Thailand

World Premiere



Three Thai children, six years of becoming.

Filmed over six years, the film follows three children growing up within Thailand's education system. Potter adjusts to a new home and faith in the deep South; Nut comes of age in a spiritual boarding school; while Tee moves through an overcrowded classroom in Bangkok. Without commentary, the film observes how everyday moments of friendship, confusion, and solitude quietly shape who they become over time.

**AKL** Mon 29 Jun | 8.00 PM | Beachside

Sun 05 Jul | 5.15 PM | Capitol

**WLG** Sat 18 Jul | 2.00 PM | Roxy

# Frost Without Snow and Ice

Asgeir Helgestad | 2026 | 95 min | Norway

Asia Pacific Premiere



In the fastest-warming place on earth, a mother bear fights to keep her cubs alive.

For ten years, Director Helgestad follows polar bear named Frost, a mother struggling to raise her cubs in a rapidly changing Arctic. A story of survival and love, conflict and loss in Svalbard, the fastest-warming place on earth. Helgestad is left with a question that frames the film: can empathy and understanding bridge the gap between humans and other animals before it's too late?

**AKL** Sun 28 Jun | 11.00 AM | Beachside

Mon 06 Jul | 6.00 PM | Capitol

**WLG** Sat 25 Jul | 10.00 AM | Roxy

# In the Path of Giants

Fayed Khan, Kirsty Wells | 2025 | 89 min | Bangladesh, UK

Asia Pacific Premiere



**AKL** Mon 29 Jun | 6.00 PM | Beachside  
Wed 08 Jul | 8.00 PM | Capitol  
**WLG** Thu 23 Jul | 6.15 PM | Roxy

**Where refugees, farmers, and elephants compete for home.**

In 2017, Bangladesh opened its borders to nearly a million Rohingya fleeing violence in Myanmar. But the vast camp built to shelter the refugees cut off Bangladesh's wild elephants from their last migratory corridor, causing them to rampage across farmland in their search for food. The result is a tense stand-off as Rohingya refugees, local Bengalis and Indigenous farmers are forced to contend with the elephants in a fight for land, survival and a place to call home.

*Doc Edge Pitch Project*

# Kabul, Between Prayers

Aboozar Amini | 2025 | 101 min | Netherlands, Belgium

Australasia Premiere



**AKL** Wed 01 Jul | 8.00 PM | Beachside  
Sun 12 Jul | 11.00 AM | Capitol  
**WLG** Fri 17 Jul | 8.30 PM | Roxy

**As one brother lives by doctrine, the other grows up inside it.**

A devoted soldier of the Taliban's ideology that has shaped his destiny since birth, Samim struggles between the alluring promises of martyrdom and the mundanity of his daily existence as a husband and farmer. Samim's younger brother, Rafi, idolises him as he navigates the confusion of adolescence, leaving behind playfulness to enter a world shaped by decades of military intervention and resulting radicalisation.

*Director Aboozar Amini is a Doc Edge alumni*

# Loving Karma

Johnny Burke, Andrew Hinton | 2025 | 80 min | India, UK, USA

Australasia Premiere



**AKL** Sat 27 Jun | 12.00 PM | Beachside  
Sun 05 Jul | 3.15 PM | Capitol  
**WLG** Sun 26 Jul | 7.45 PM | Roxy

## What happens when suffering meets compassion?

In the remote foothills of the Himalayas, former monk Lobsang Phuntsok founded Jhamtse Gatsal, a refuge for children shaped by abandonment and trauma. Once a teacher in the United States of America, he returned to India to build the community he never had as an orphan. Tashi, the youngest and most volatile arrival, carries the scars of a fractured childhood and resists every attempt at care. Twelve years after the Emmy Award winning *Tashi and the Monk*, this film follows their lives and a new generation of children, revealing a community where healing emerges through shared responsibility, presence, and love.

*Directors Johnny Burke and Andrew Hinton are Doc Edge alumni*

# Mar Musa

Shahab Kermani | 2026 | 97 min | Germany, Syria

World Premiere



**AKL** Sun 28 Jun | 7.00 PM | Beachside  
Mon 06 Jul | 8.00 PM | Capitol  
**WLG** Wed 22 Jul | 8.30 PM | Roxy

## A sanctuary of peace in a wounded land.

In the Syrian mountains of Al Ghalamoun, overlooking the vast desert, stands the ancient Christian monastery of Mar Musa, a beacon of interfaith dialogue and radical hospitality in a fractured land. The film follows the monks and nuns through intimate, observational storytelling as they navigate postwar devastation working towards peace, even in the face of grave personal loss. Through cinematography and a hypnotic score, this film emerges as a profound metaphor for Syria itself.

# TŪRANGAWAEWAE WHERE WE STAND

A place to stand. A place to belong. These five films root us in the land, rivers and oceans that sustain us, and the peoples fighting to protect them. From a Nuxalk river waiting to come alive again, to a Papua New Guinean activist seeking rights for a mother river, to an elder honouring the sacred bond between whales and ancient trees. The earth is speaking.

## Ceremony

Banchi Hanuse | 2026 | 84 min | Canada

Asia Pacific Premiere



What the river lost, the people remember.

After a long winter in Bella Coola's Coast Mountains, the arrival of the ooligan was a time of celebration for the Nuxalk people. It brought vital nourishment and medicine. For 26 years they have been gone. The Nuxalk Nation carries this absence like a wound: an ecosystem collapse entangled with smallpox, occupied land, and silenced culture. Now, as one family builds the first home back in their ancestral village, something stirs in the river.

**AKL** Sat 27 Jun | 6.00 PM | Beachside

Sat 11 Jul | 2.30 PM | Capitol

**WLG** Fri 24 Jul | 6.00 PM | Roxy

# Ranginui: Call of the Ice

Julia Sartorio, Miriama Kamo | 2026 | 60 min | New Zealand, Antarctica

World Premiere



**AKL** Fri 10 Jul | 2.15 PM | Beachside  
Fri 10 Jul | 6.30 PM | Capitol  
**WLG** Tue 21 Jul | 6.00 PM | Roxy

What is revealed depends on how closely you are willing to look.

Antarctica in winter is one of the most extreme places on Earth: isolated, locked in darkness, and  $-50^{\circ}\text{C}$ . Māori astronomer Rangi Matamua and language expert Mataia Keepa enter this frozen world, where science and Indigenous knowledge meet in real time. Rangi carries a personal promise to honour his grandfather's dying wish and share Māori starlore beyond Aotearoa. When unexpected snowstorms roll in, they are forced to stay longer than planned, cut off inside a continent that continues to shift and close in around them. Through auroras, storms, first sunrise and shifting ice, they learn to read a living landscape most will never witness.

*Made with the support of Te Māngai Pāho, TVNZ and RNZ.*

# Remathau: People of the Ocean

Daniel H Lin | 2025 | 70 min | USA

International Premiere



**AKL** Sun 28 Jun | 5.00 PM | Beachside  
Fri 10 Jul | 12.00 PM | Capitol  
**WLG** Fri 24 Jul | 6.15 PM | Roxy

The deepest dive reveals an ancient lineage.

Nicole Yamase becomes the first Micronesian and Indigenous person to dive to "Challenger Deep" in the Marianas Trench, the deepest point in the ocean. As global attention intensifies, the weight of expectation pushes her to confront what it means to carry this historic first. Beyond the record, she turns inward, exploring her identity as a descendant of master navigators. In the silence of the ocean's depths, a richer story emerges of Pacific resilience where culture, language and ancestral knowledge endure.

Screens with *Tied with the Tides* (9 min, p.60)

# Sukundimi Walks Before Me

Matasila Freshwater, Lachlan McLeod | 2026 | 94 min  
Australia, New Zealand

International Premiere



Where a river's rights become a people's fight.

A devastating copper-gold mine is proposed to be built near the headwaters of one of the last remaining great rivers; the children of the Sepik embark on an indigenous-led resistance to protect her waters. The film explores this existential fight through lyrical expressions of existence, resistance and life along the mother river.

*Doc Edge Pitch Project*

**AKL** Sat 27 Jun | 3.00 PM | Capitol  
Fri 10 Jul | 12.00 PM | Beachside  
**WLG** Mon 20 Jul | 8.30 PM | Roxy

# The War Below: Restoring Hope in the Solomon Islands

Tuki Laumea | 2026 | 50 min | New Zealand

Australasia Premiere



Beneath the beauty lies a dormant terror.

In the Solomon Islands, thousands of unexploded WWII bombs remain under homes and schools. 80 years after the war, bombs continue to kill and injure families. Lorettalyn lives with severe injuries from a blast that killed her husband and young son, now raising her remaining children while navigating long-term physical and economic hardship. Maeverlyn, who survived a separate explosion that severely injured her and killed members of her community, establishes Bomb Free Solomon Islands - a survivor-led organisation advocating for awareness, support, and long-term solutions to the ongoing threat.

**AKL** Sun 28 Jun | 3.00 PM | Beachside  
Fri 10 Jul | 4.30 PM | Capitol  
**WLG** Tue 21 Jul | 8.00 PM | Roxy

Screens with *Digital Traditions:*  
*Kastom Keeper (18 min, p.59)*

# Unlikely Kin

Kim Webby, Michael Jonathan | 2026 | 93 min | New Zealand

World Premiere



**AKL** Wed 24 Jun | 7.30 PM | Beachside  
Fri 10 Jul | 2.00 PM | Capitol  
**WLG** Mon 20 Jul | 6.00 PM | Roxy

## Whales, trees, and kinship beyond species.

Filmed over five years, the film follows elder Hori Parata (Ngāti Wai) and his son Te Kaurinui as they lead the sacred practice of harvesting stranded whales—not for consumption, but to honour whakapapa and revive traditional medicine used to treat kauri dieback, a disease killing New Zealand’s ancient trees. Alongside this, we follow their conservation work protecting the kiore, the Polynesian rat that arrived in Aotearoa with the great Māori migration. Interweaving themes of kinship between species, cultural survival, and Māori-led conservation, the film offers rare access to a sacred world where whales, forests, and even rats are revered as living ancestors.

*Co-director Kim Webby is a Doc Edge alumni*

*Made with the support of NZ On Air, RNZ, New Zealand Film Commission, Pacific Islander in Communication.*

EMA

Tools to  
keep your  
business safe.

> [HARMREDUCTIONHUB.CO.NZ](https://harmreductionhub.co.nz)

- > GUIDANCE
- > TRAINING
- > RESOURCES
- > CONSULTING
- > ADVOCACY
- > CULTURE



# FRENCH CONNECTION



An unflinching window into the French filmmaking world, and the stories it cannot look away from. A father's silence speaks through his drawings. A journalist returns home to reckon with violence and denial. On a Marseille beach, women remake the world with nothing left to prove. And from inside Gaza, cameras bear witness where no other can enter.

## Cagnat, Drawing or Nothing (Cagnat, le dessin sinon rien)

Alice Cagnat | 2024 | 52 min | France

International Premiere



**17,000 drawings, one silence, and a father's story waiting to be told.**

Since the Charlie Hebdo attack, Jean-Pierre Cagnat, a press cartoonist, no longer draws. The National Library of France offered to archive part of his work. After his divorce from his wife, he left his 17,000 drawings in the cellar of his family home, which he no longer lives in. His daughter, Director Alice Cagnat, proposed an arrangement: she would help him sort through his drawings, in exchange for his life story as a man and an artist.

**AKL** Sat 27 Jun | 2.00 PM | Beachside  
Tue 07 Jul | 6.15 PM | Capitol  
**WLG** Wed 22 Jul | 4.30 PM | Roxy

*Screens with If You Don't Like It,  
Look Away (Au Bain des Dames)  
(29 min, p.60)*

# Collapse (Effondrement)

Anat Even | 2026 | 78 min | France

Asia Pacific Premiere



**AKL** Tue 30 Jun | 6.00 PM | Beachside  
Sat 04 Jul | 12.00 PM | Capitol  
**WLG** Sat 18 Jul | 6.15 PM | Roxy

**A return home becomes a vantage point on violence, distance, and denial.**

Shortly after October 7, 2023, Director Even returns to what was once her home, traversing for over two years the remnants of the kibbutz of Nir Oz and its environs, now repurposed for tourist itineraries and military training exercises. From distant vantage points along the fence demarcating the Gaza Strip, she observes the gradual ruination across the border and the calculated maneuvers of IDF troops. A cinematic essay, the film chronicles systematic violence while exposing the muted indifference of spectators.

# Inside Gaza

Hélène Lam Trong | 2025 | 72 min | Belgium, France

Asia Pacific Premiere



**AKL** Tue 30 Jun | 8.15 PM | Beachside  
Thu 02 Jul | 6.15 PM | Capitol  
**WLG** Wed 22 Jul | 6.00 PM | Roxy

**Bearing witness when no one else can enter.**

Free access to the Gaza Strip has remained closed to international journalists since the war began on October 7, 2023. Agence France-Presse (AFP) local reporters are among the few witnesses inside, documenting the conflict while struggling to survive. From exile, they recount a war that has become the deadliest on record for the press. Drawing on hundreds of hours of footage, photographs and reporting, Mai Yaghi, Adel El-Zaanun, Mohammed Abed and Mahmud Hams evoke the shock of escalation, the constant presence of the dead and wounded, and the burden of bearing witness.

# SPECIAL PRESENTATION

Doc Edge is proud to present the world premiere of the latest episode of *NZ Wars: Stories of Waerenga-a-Hika*, a landmark moment for both the series and for the communities whose history it honours.

## NZ Wars: Stories of Waerenga-a-Hika

Cameron Bennett, Richard Curtis | 2026 | 43 min | New Zealand

World Premiere



AKL Sat 11 Jul | 11.00 AM | Capitol

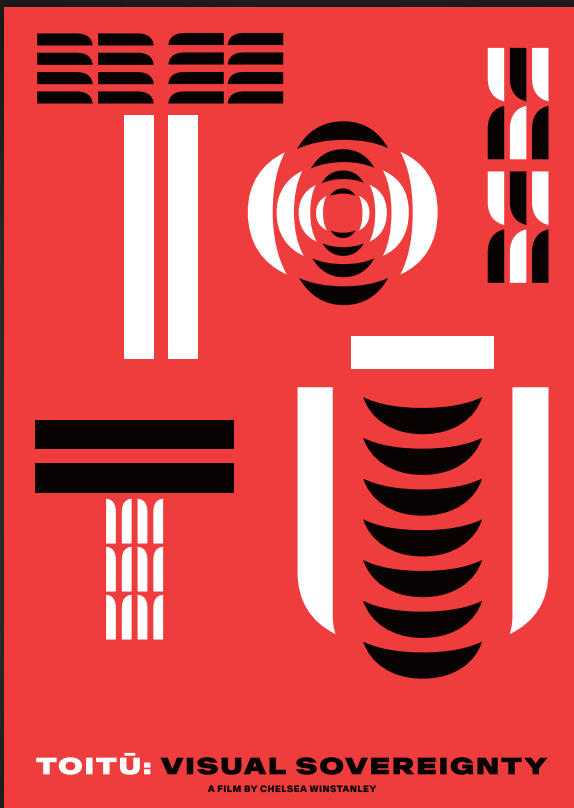
In 1865, the pā at Waerenga-a-Hika became the flashpoint for one of the most significant conflicts of the New Zealand Wars. Within its walls, hundreds of Māori—men, women, and children—endured a siege that would irrevocably alter the future of Tūrangānui-a-Kiwa.

*NZ Wars: Stories of Waerenga-a-Hika* returns to this sacred site through the voices of descendants whose ancestors lived, fought, and survived. Blending intimate storytelling and dramatic reconstruction with the very landscapes where these events unfolded, the film brings to light a history long overlooked by many, but never forgotten by those who carry it.

More than a chronicle of battle, this film is an act of remembrance and reclamation. It reflects on the enduring legacy of war and land loss while honouring the profound resilience of the Tūrangā communities.

*Made with the support of NZ On Air and RNZ*

In The Capitol Cinema Only



For more than a decade, we have had the privilege of supporting New Zealand's talented documentary filmmakers. Providing them the credited artists and world-class tools they deserve to bring Aotearoa's stories to the screen.



DEPARTMENT  
OF POST



# AUCKLAND SCHEDULE

WED 24 JUN

THU 25 JUN

FRI 26 JUN

SAT 27 JUN

CAPITOL

BEACHSIDE

CAPITOL

BEACHSIDE

CAPITOL

BEACHSIDE

CAPITOL

BEACHSIDE

## WORLD PRESS PHOTO & DOC EDGE IMMERSIVE EXHIBITION

**Smith & Caughey's Queen Street**

10.00 AM — 8.00 PM

Tickets at [docedge.nz](http://docedge.nz)  
See Page 62

11.00 AM  
Kikuyu  
Land

p12

12.00 PM  
Loving  
Karma

p33

1.00 PM  
Half  
Moon

p19

2.00 PM  
Cagnat,  
Drawing or  
Nothing

p38

3.00 PM  
Sukundimi  
Walks  
Before Me

p36

4.15 PM  
Tough  
Old Broads

p29

5.30 PM  
Dance For  
Your Life

p18

6.00 PM  
Ceremony

p34

6.30 PM  
Revolution's  
Daughter

p28

6.00 PM  
Let Our  
Mountains  
Live

p12

6.15 PM  
The Essence  
of Eva

p19

6.15 PM  
Music and  
the Mystical  
Experience

p20

6.30 PM  
Yo

p21

7.30 PM  
Unlikely  
Kin

p37

8.15 PM  
There's a  
Hole in My  
Bucket

p24

8.00 PM  
American  
Doctor

p22

8.15 PM  
Modern  
Whore

p16

8.15 PM  
Cambodian  
Beer Dreams

p10

8.00 PM  
Finding  
Honk

p15

8.00 PM  
Yanuni

p29

SUN 28 JUN		MON 29 JUN		TUE 30 JUN		WED 01 JUL	
CAPITOL	BEACHSIDE	CAPITOL	BEACHSIDE	CAPITOL	BEACHSIDE	CAPITOL	BEACHSIDE
11.00 AM Kings of Venice p23	11.00 AM Frost Without Snow and Ice p31						
1.00 PM Legacy p20	1.00 PM Labour of Love p53						
<b>DOC EDGE INDUSTRY EVENT</b>							
3.00 PM A War on Women p26	3.00 PM The War Below p36	<b>Grand Millennium Auckland</b> Tickets at docedge.nz See Page 70				<b>AWARDS</b> 7.00 PM Tickets at docedge.nz	
5.30 PM Redlight to Limelight p28	5.00 PM Remathau: People of the Ocean p35	6.00 PM Replica p17	6.00 PM In the Path of Giants p32	6.00 PM Return to the Strange Land p21	6.00 PM Collapse p39	6.15 PM The Life We Leave p15	6.00 PM Coexistence, My Ass! p27
7.45 PM For Life p27	7.00 PM Mar Musa p33	8.15 PM 58th p14	8.00 PM First Cuts are the Deepest p31	8.00 PM The Werewolf in the Waves p24	8.15 PM Inside Gaza p39	8.15 PM The Lives of My Father p11	8.00 PM Kabul, Between Prayers p32

# AUCKLAND SCHEDULE

THU 02 JUL

FRI 03 JUL

SAT 04 JUL

SUN 05 JUL

CAPITOL

BEACHSIDE

CAPITOL

BEACHSIDE

CAPITOL

BEACHSIDE

CAPITOL

BEACHSIDE

## WORLD PRESS PHOTO & DOC EDGE IMMERSIVE EXHIBITION

### Smith & Caughey's Queen Street

10.00 AM — 8.00 PM

Tickets at [docedge.nz](http://docedge.nz)  
See Page 62

12.00 PM  
Collapse

p39

12.00 PM  
Return to  
the Strange  
Land

p21

11.00 AM  
The View  
From Here

p55

11.00 AM  
Dance For  
Your Life

p18

1.15 PM  
Labour  
of Love

p53

1.30 PM  
For Life

p27

2.00 PM  
Molly  
vs The  
Machines

p16

2.00 PM  
Steps  
of  
Courage

p56

3.15 PM  
Loving  
Karma

p33

3.30 PM  
feather  
Strength

p23

4.00 PM  
American  
Doctor

p22

4.00 PM  
Leaving  
a Mark

p52

5.15 PM  
First Cuts  
are the  
Deepest

p21

5.30 PM  
Legacy

p20

6.15 PM  
Inside  
Gaza

p39

6.15 PM  
58th

p14

6.00 PM  
Close to  
Heart

p57

6.00 PM  
A War on  
Women

p26

6.00 PM  
feather  
Strength

p23

6.00 PM  
Let Our  
Mountains  
Live

p12

8.15 PM  
The Trial  
of Alec  
Baldwin

p13

8.00 PM  
Replica

p17

8.00 PM  
The Art of  
Adventure

p30

8.15 PM  
The  
Werewolf in  
the Waves

p24

8.00 PM  
Seized

p13

8.15 PM  
Kings of  
Venice

p23

7.45 PM  
Elon Musk  
Unveiled

p11

7.30 PM  
Redlight to  
Limelight

p28

MON 06 JUL		TUE 07 JUL		WED 08 JUL		THU 09 JUL	
CAPITOL	BEACHSIDE	CAPITOL	BEACHSIDE	CAPITOL	BEACHSIDE	CAPITOL	BEACHSIDE
6.00 PM Frost Without Snow and Ice <small>p31</small>	6.15 PM Modern Whore <small>p16</small>	6.15 PM Cagnat, Drawing or Nothing <small>p38</small>	6.15 PM Revolution's Daughter <small>p28</small>	6.00 PM Steps of Courage <small>p56</small>	6.15 PM Molly vs The Machines <small>p60</small>	6.00 PM Yanuni <small>p29</small>	6.00 PM Kings of Venice <small>p23</small>
8.00 PM Mar Musa <small>p33</small>	8.45 PM Encore TBA	8.15 PM Encore TBA	8.15 PM Encore TBA	8.00 PM In the Path of Giants <small>p32</small>	8.00 PM Encore TBA	8.15 PM Yo <small>p21</small>	8.00 PM Half Moon <small>p19</small>

# AUCKLAND SCHEDULE

FRI 10 JUL | MATARIKI

SAT 11 JUL

SUN 12 JUL

CAPITOL	BEACHSIDE	CAPITOL	BEACHSIDE	CAPITOL	BEACHSIDE
		11.00 AM NZ Wars <small>p40</small>	10.30 AM The Life We Leave <small>p15</small>	11.00 AM Kabul, Between Prayers <small>p32</small>	11.15 AM Close to Heart <small>p57</small>
12.00 PM Remathau: People of the Ocean <small>p35</small>	12.00 PM Sukundimi Walks Before Me <small>p36</small>	12.30 PM Leaving a Mark <small>p52</small>	12.30 PM Elon Musk Unveiled <small>p11</small>	1.00 PM The Essence of Eva <small>p19</small>	1.15 PM Music and the Mystical Experience <small>p20</small>
2.00 PM Unlikely Kin <small>p37</small>	2.15 PM Ranginui: Call of the Ice <small>p35</small>	2.30 PM Ceremony <small>p34</small>	2.30 PM Seized <small>p13</small>	2.45 PM Coexistence, My Ass! <small>p27</small>	3.15 PM The View From Here <small>p55</small>
4.30 PM The War Below <small>p36</small>	4.00 PM The Art of Adventure <small>p30</small>	4.15 PM The View From Here <small>p55</small>	4.30 PM Finding Honk <small>p15</small>	4.45 PM Tough Old Broads <small>p29</small>	5.15 PM There's a Hole in My Bucket <small>p24</small>
6.30 PM Ranginui: Call of the Ice <small>p35</small>	6.00 PM Kikuyu Land <small>p12</small>	6.15 PM Cambodian Beer Dreams <small>p10</small>	7.00 PM The Lives of My Father <small>p11</small>	7.00 PM Award Winner Encore	7.30 PM Award Winner Encore
8.15 PM Encore TBA	8.00 PM Encore TBA		8.30 PM The Trial of Alec Baldwin <small>p13</small>		



Irirangi Te Motu  
NZ On Air

# Proudly supporting documentary makers to tell the stories of Aotearoa

Earth Oven With Temuera Morrison, Earth  
Oven Productions Limited for Sky Open

Real people.  
Real stakes.  
Real courage.

New Zealand  
FILM COMMISSION



Te Tumu Whakaata Taonga



Crocodile



Tenor: My Name is Pati



[www.nzfilm.co.nz](http://www.nzfilm.co.nz)

# WELLINGTON SCHEDULE

WED 15 JUL		THU 16 JUL		FRI 17 JUL		SAT 18 JUL	
ROXY 1	ROXY 2	ROXY 1	ROXY 2	ROXY 1	ROXY 2	ROXY 1	ROXY 2
							12.15 PM 58th <small>p14</small>
							2.00 PM First Cuts are the Deepest <small>p31</small>
			3.45 PM Leaving a Mark <small>p52</small>				
	4.15 PM Labour of Love <small>p53</small>				4.30 PM Legacy <small>p20</small>		4.15 PM For Life <small>p27</small>
6.00 PM Revolution's Daughter <small>p28</small>		6.00 PM Tough Old Broads <small>p29</small>		5.45 PM Dance For Your Life <small>p18</small>		5.45 PM Music and the Mystical Experience <small>p20</small>	
					6.30 PM The Life We Leave <small>p15</small>		6.15 PM Collapse <small>p39</small>
	8.30 PM The Lives of My Father <small>p11</small>				8.30 PM Kabul, Between Prayers <small>p#</small>		

SUN 19 JUL		MON 20 JUL		TUE 21 JUL		WED 22 JUL	
ROXY 1	ROXY 2	ROXY 1	ROXY 2	ROXY 1	ROXY 2	ROXY 1	ROXY 2
	<p><b>12.15 PM</b> Steps of Courage</p> <p>p56</p>						
	<p><b>2.15 PM</b> feather Strength</p> <p>p23</p>						
<p><b>3.45 PM</b> A War on Women</p> <p>p26</p>							
							<p><b>4.30 PM</b> Cagnat, Drawing or Nothing</p> <p>p38</p>
<p><b>5.45 PM</b> Elon Musk Unveiled</p> <p>p11</p>		<p><b>6.00 PM</b> Unlikely Kin</p> <p>p37</p>	<p><b>6.30 PM</b> Close to Heart</p> <p>p57</p>	<p><b>5.15 PM</b> The Trial of Alec Baldwin</p> <p>p13</p>	<p><b>6.00 PM</b> Ranginui: Call of the Ice</p> <p>p35</p>	<p><b>6.00 PM</b> Inside Gaza</p> <p>p39</p>	<p><b>6.15 PM</b> The Werewolf in the Waves</p> <p>p24</p>
	<p><b>8.30 PM</b> Half Moon</p> <p>p19</p>	<p><b>8.15 PM</b> Finding Honk</p> <p>p15</p>	<p><b>8.30 PM</b> Sukundimi Walks Before Me</p> <p>p36</p>	<p><b>7.30 PM</b> There's a Hole in My Bucket</p> <p>p24</p>	<p><b>8.00 PM</b> The War Below</p> <p>p36</p>		<p><b>8.30 PM</b> Mar Musa</p> <p>p33</p>

# WELLINGTON SCHEDULE

THU 23 JUL		FRI 24 JUL		SAT 25 JUL		SUN 26 JUL	
ROXY 1	ROXY 2	ROXY 1	ROXY 2	ROXY 1	ROXY 2	ROXY 1	ROXY 2
					10.00 AM Frost Without Snow and Ice <small>p31</small>		10.00 AM The Art of Adventure <small>p30</small>
					12.00 PM Seized <small>p13</small>		12.00 PM Let Our Mountains Live <small>p12</small>
					2.00 PM Modern Whore <small>p16</small>		2.00 PM Return to the Strange Land <small>p21</small>
					4.05 PM Replica <small>p17</small>		4.00 PM Molly vs The Machines <small>p16</small>
5.45 PM American Doctor <small>p22</small>	4.30 PM The View From Here <small>p55</small>		4.30 PM The Essence of Eva <small>p19</small>	5.45 PM Yanuni <small>p29</small>		5.30 PM Coexistence, My Ass! <small>p27</small>	5.50 PM Kikuyu Land <small>p12</small>
	6.15 PM In the Path of Giants <small>p32</small>	6.00 PM Ceremony <small>p34</small>	6.15 PM Remathau: People of the Ocean <small>p35</small>		6.15 PM Yo <small>p21</small>		
	8.30 PM Cambodian Beer Dreams <small>p10</small>		8.15 PM Kings of Venice <small>p23</small>		8.00 PM Redlight to Limelight <small>p28</small>		7.45 PM Loving Karma <small>p33</small>

# CHRISTCHURCH

## 31 JULY - 2 AUGUST SHOWCASE



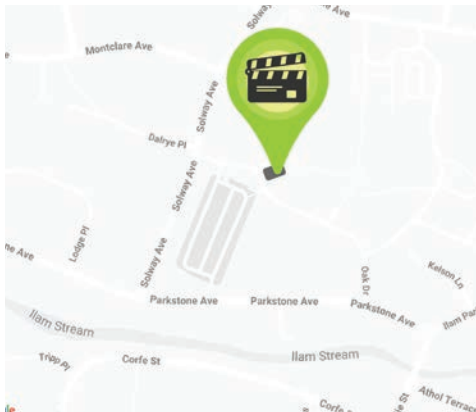
Doc Edge heads south this winter, bringing a handpicked selection of the best of the 2026 festival to Ōtautahi Christchurch.

The Christchurch Showcase will feature a curated programme of films from this year's festival, including award-winners and films with a Christchurch connection, alongside a local immersive project.

Whether you are a longtime Doc Edge audience member or discovering the festival for the first time, the Christchurch Showcase offers a concentrated taste of the powerful documentary storytelling that has defined this year's programme.

Full programme details, including selected films and the immersive project, will be announced in mid-June.

For the latest information, visit [docedge.nz](http://docedge.nz)



**Jack Mann Building, Dovedale Campus  
Ilam, Christchurch**

# SHORTS

This year's short film programme is presented in five collections: Leaving a Mark, Labour of Love, The View From Here, Steps of Courage, and Close to Heart. Each gathering four films around a shared theme.

## Leaving a Mark

65 min

What does it mean to make something that lasts? From a pink church in Greymouth to Dick Frizzell's studio, from a Kiwi art collection under the hammer to Joshua Oppenheimer's meditation on immortality, these four shorts ask whether art, like life, is ever truly finished.

AKL Sat 04 Jul | 4.00 PM | Beachside  
Sat 11 Jul | 12.30 PM | Capitol  
WLG Thu 16 Jul | 3.45 PM | Roxy



## The Revolution Against Death

Asia Pacific Premiere

Joshua Lincoln Oppenheimer | 2026  
24 min | Denmark

Two-time Oscar® nominee Joshua Oppenheimer's (*The Act of Killing* and *The Look of Silence*) film about technology, self-deception, and the dream of immortality under the dazzling Californian sun.



## Gloria

World Premiere

Loren Jalyn Kett | 2026 | 16 min | New Zealand

In Greymouth, Sam, a queer artist, paints a church pink and fills it with paper-mâché parishioners. Is art ever truly finished, or does it keep evolving like the people who make it?



## Good Kunst

World Premiere

Phillida Perry | 2026 | 12 min | New Zealand

When a group of Kiwi women bring their hard-won art collection to auction, long-held bonds are tested as the true value of friendship, ambition, and art are put under the hammer.

*Director Phillida Perry is a Doc Edge alumni*



## The Weight of the World

World Premiere

Sam Templeton | 2026 | 15 min | New Zealand

From first pencil line to gallery unveiling, this film follows iconic New Zealand artist Dick Frizzell as he creates a new landscape painting — revealing his process, his wit, and the weight of making art that matters.

# Labour of Love

# 73 min

For some, work is not what you do. It is who you are. A cobbler finds peace in craft. A hotline reveals tender lives behind kitchen catastrophes. A sailor keeps his bookstore open after dark. And behind the world's greatest piano competition, tuners chase perfect pitch.

<b>AKL</b>	Sun 28 Jun   1.00 PM   Beachside
	Sun 05 Jul   1.15 PM   Capitol
<b>WLG</b>	Wed 15 Jul   4.15 PM   Roxy



## The Baker's Hotline

New Zealand Premiere

Dave Schuman, Emily Schuman | 2026  
12 min | USA

At King Arthur Flour Call Centre, a hotline for baking emergencies, a small team fields calls from strangers in crisis, only to discover that behind each kitchen catastrophe lies a tender, messy slice of someone's life.

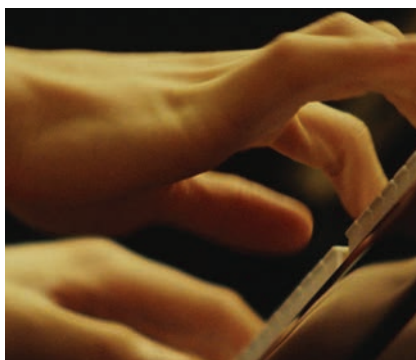


## The Bookstore That Never Sleeps

World Premiere

Justin Zoras | 2026 | 27 min | Canada

In the quiet port town of Lunenburg, Nova Scotia, a bookstore awakens for night owls and wanderers. Its owner, Christopher Webb, a former sailor, carries the emotional echoes of his time at sea and now keeps the bookstore open after sundown as a quiet tribute to a beloved friend.



## The Tuners (Stroiciele)

Australasia Premiere

Pawel Chorzepa | 2026 | 21 min | Poland

In the shadows of the world's most important piano competition, a group of expert tuners spend a month vying to achieve the perfect pitch so that the champion pianist will win on their instrument.



## Sole (얼)

International Premiere

Haneol Lee | 2026 | 13 min | USA

A Korean American cobbler in Nashville, Tennessee, finds peace in his simple life, revealing how pride in one's craft becomes a way of being.

# The View From Here

83 min

From windows, shorelines, and occupied villages, these four films bear witness to the world's most urgent fractures. An elderly Ukrainian couple survives fire and occupation. Two brothers in Gaza remain bound by the sea despite siege and separation. And sometimes, the most powerful act of resistance is simply to keep watching.

**AKL** Sun 05 Jul | 11.00 AM | Capitol  
Sat 11 Jul | 4.15 PM | Capitol  
Sun 12 Jul | 3.15 PM | Beachside  
**WLG** Thu 23 Jul | 4.30 PM | Roxy



## Ember

International Premiere

Vladyslav Kalenskyi | 2026 | 12 min  
Ukraine, Luxembourg

An elderly couple is trapped in their village near Kyiv as it falls under Russian occupation. When a fire destroys their home, they are forced to seek refuge with neighbours and find a way out.



## Student Army (红旗下的蛋)

World Premiere

Hank Chen | 2026 | 29 min | China

Each year, over 10 million students enter Chinese universities. Their first lesson is two weeks of mandatory military training, from combat drills to patriotic education. With youthful zeal, under state direction, they begin learning to become warriors, marking their first political baptism into adulthood.



## Memories of a Window

Asia Pacific Premiere

Amin Pakparvar, Mehraneh Salimian | 2026  
19 min | Iran, USA, Germany

Following crackdowns on protests in Iran, civilians begin documenting the unrest from their homes. When a woman is shot while recording, a film student writes her a letter raising the question: can revolution emerge from behind windows?



## Free Fish (ةرّج كامسأ)

Asia Pacific Premiere

Bisan Owda | 2025 | 23 min  
Palestine, Portugal

Filmed in Gaza during one of the deadliest years in recent history, the film follows two brothers, Mohammad and Ahmad Kaloob, separated by siege and displacement, yet bound by the sea.

## Steps of Courage

## 75 min

Courage wears many faces. A teenager in a Kampala slum sings her questions to God. Women from the Chatham Islands turn a breast screening trip into a ritual of defiance. A young Kiwi farmer runs Canada's highways in a Superman costume. And two mountaineers make history on Mt Cook.

**AKL** Sat 04 Jul | 2.00 PM | Beachside  
Wed 08 Jul | 6.00 PM | Capitol  
**WLG** Sun 19 Jul | 12.15 PM | Roxy



## Hunter's Moon

World Premiere

Christina Lusti, Gee Pierrel | 2026  
14 min | USA

Mountaineers Christina Lusti and Gee Pierrel are the first to summit and ski Mt Cook, in which they called their run "Hunter's Moon".

*Shared World Premiere with the NZ Mountain Film Festival*



## Race Be Run

World Premiere

Prabhjit Sabharwal, Richard Carey | 2026  
15 min | Canada, New Zealand

A young Kiwi farmer dons a Superman costume and runs solo along Canada's highways raising money for cancer charities. Along the way, he processes the sudden loss of his parents, and the realisation of what cancer's familial links now means for his own mortality.



## Chicken Ghetto

Asia Pacific Premiere

Sangsun Choi | 2025 | 18 min | USA

Mable is a teenager living in the Banda slum of Kampala, Uganda. She loves singing on the streets and carries many questions for God, one of them being: why is she the only one in her family with sickle cell disease?



## Girls' Flight Out

World Premiere

Anna Pearson, Nick Kowalski | 2026  
28 min | New Zealand

An intriguing and entertaining film on a serious topic. On a remote island, 870 kilometres from their designated breast screening facility, a group of women from the Chatham Islands turn a biennial "Boobie Trip" into a ritual of humour, solidarity and quiet defiance against geographic inequality.

---

## Close to Heart

## 84 min

Love in all its forms — between partners, species, and the places we call home. A granddaughter captures sixty years of love meeting ten years of Alzheimer's, while a 1970s discovery rewrites what we thought we knew about seagulls and partnership. Tender, surprising, and quietly profound.

**AKL** Fri 3 Jul | 6.00 PM | Capitol

Sun 12 Jul | 11.15 AM | Beachside

**WLG** Mon 20 Jul | 6.30 PM | Roxy



## The Place Where Memories Hide

World Premiere

Jenny Barruol | 2026 | 22 min | USA

Sixty years of love, ten years of Alzheimer's. As David fills diaries trying to hold onto his memories, his wife Maureen faces an impossible choice. Their granddaughter, Director Jenny Barruol, captures an intimate, devastating portrait of love and letting go.



## Jacqueline Fahey: From Where I'm Looking

World Premiere

Oliver Dawe | 2026 | 18 min | New Zealand

An exploration of Jacqueline Fahey's life and career as a writer, artist and "sneaky" political activist.

*Director Oliver Dawe is a Doc Edge alumni*



## Stoats' Last Stand

World Premiere

Arron J Cluka | 2026 | 16 min | New Zealand

Seven years ago, a community organisation on Waiheke Island set out to eradicate stoats that have been decimating New Zealand's native birdlife. With iwi, community, and sponsor support, the stoats are retreating and the birds are coming back.



## Love Birds

Asia Pacific Premiere

Angel Morris, Elliott Kennerson | 2025  
28 min | USA

In 1972, married biologists George Hunt and Molly Warner make an unprecedented discovery while studying seagulls on one of California's Channel Islands. To their surprise, a great number of the nesting pairs they observe are both female.

*Producer Molly O'Brien is a Doc Edge alumni*

# Short Films Screening with Features ♦

These six short films screen alongside a feature, each a powerful story in its own right. From underwater caves to Pacific atolls, from a Mexican village to the Solomon Islands, they remind us that the most urgent truths often arrive in the shortest form.



## Chilapa Girl (Niña Chilapa)

Asia Pacific Premiere

Screens with *featherStrength* (p.23)

Juana Lotero López | 2025 | 17 min | Colombia

Thirteen-year-old Yulieth grew up surrounded by the natural beauty of Chilapa and in a poor community where women rarely choose their own path in life. Barely out of childhood, caught between her dreams of education and reality, she faces machismo and the weight of social determinism.



## Digital Traditions: Kastom Keeper

World Premiere

Screens with *The War Below* (p.36)

Tuki Laumea, Cleo Fraser | 2026  
19 min | New Zealand, Solomon Islands

In Malaita, Solomon Islands, Obama Scholar and *Moana 2* cultural advisor Millicent Barty races to preserve her people's vanishing traditions, rebuilding a traditional faefae, teaching youth to digitally archive their culture, and using ancestral knowledge to rebuild a seawall as the sea reclaims their land.



## Flashes in the Realm of Caves

International Premiere

Screens with *Return to the Strange Land* (p.21)

Madeline G Kennedy | 2025 | 11 min | Bahamas

In the depths of an island's underwater cave system, world renowned divers, Cristina Zenato and Kewin Lorenzen, blend artistry with activism as they navigate perilous dives to capture elaborate underwater photoshoots where Cristina free-dives in dresses as an attempt to champion an urgent environmental message.



## If You Don't Like It, Look Away(Au bain des dames)

Australasia Premiere

Screens with *Cagnat, Drawing or Nothing* (p.38)

Margaux Fournier | 2025 | 30 min | France

Every day, Joëlle meets her retired friends on Bain des Dames's beach in Marseille. As if in an open-air theatre, they laugh; talk about love, sex, aging bodies; and remake the world with the freedom of those who have nothing left to prove.



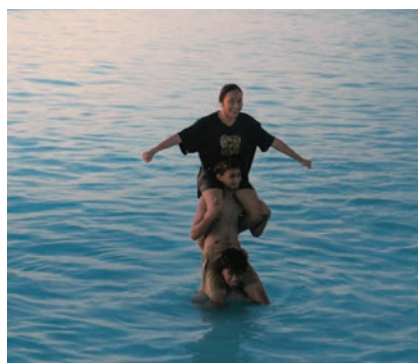
## Monster Slayer

Asia Pacific Premiere

Screens with *Modern Whore* (p.16)

Catie Skipp | 2025 | 21 min | USA

When Monty's pleas for justice go unheard after she is assaulted while working at a strip club, she paints a billboard to confront both her assailant and the stigma surrounding sex work.



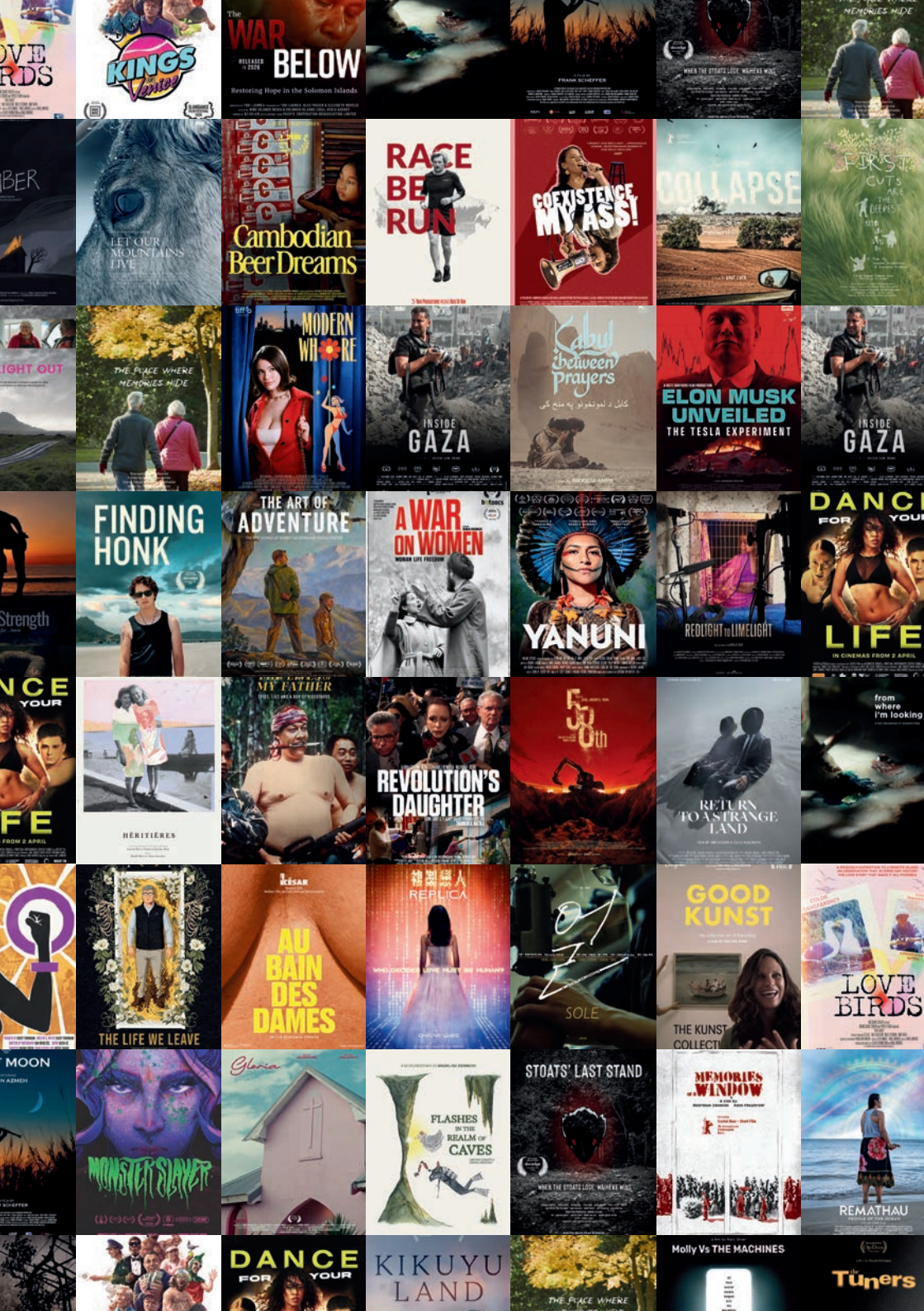
## Tied with the Tides

World Premiere

Screens with *Remathau: People of the Ocean* (p.35)

Andy Hui Liuxing | 2026 | 10 min | Singapore

Tuvalu is one of the world's most vulnerable island nations. It is sinking. For its young people, climate change is forcing them to make an impossible choice: leave for a future elsewhere, knowing you may never return, or stay and fight for a home the ocean is claiming.



**LOVE BIRDS**  
Cannes

**KINGS**  
Cannes

**THE WAR BELOW**  
RELEASED IN 2020  
Restoring Hope in the Solomon Islands  
Cannes

**RACE TO BERLIN**  
FRANK SCHEFFER

**WHEN THE STREETS LOSE THEIR NAME**  
Cannes

**MEMORIES IN A WINDOW**  
Cannes

**REMAATHAU**  
Cannes

**THE PLACE WHERE MEMORIES HIDE**  
Cannes

**LET OUR MOUNTAINS LIVE**  
Cannes

**Cambodian Beer Dreams**  
Cannes

**RACE TO BERLIN**  
Cannes

**GO EXISTENCE MY ASS!**  
Cannes

**COLLAPSE**  
Cannes

**FIRST OF THE FIRSTS**  
Cannes

**LIGHT OUT**  
Cannes

**THE PLACE WHERE MEMORIES HIDE**  
Cannes

**MODERN WHERE**  
Cannes

**INSIDE GAZA**  
Cannes

**Kabul between Prayers**  
Cannes

**ELON MUSK UNVEILED**  
THE TESLA EXPERIMENT  
Cannes

**INSIDE GAZA**  
Cannes

**STRENGTH**  
Cannes

**FINDING HONK**  
Cannes

**THE ART OF ADVENTURE**  
Cannes

**A WAR ON WOMEN**  
WINNER LIFE FESTIVAL  
Cannes

**YANUNI**  
Cannes

**REDLIGHT in LIMELIGHT**  
Cannes

**DANCE FOR YOUR LIFE**  
Cannes

**HERITIÈRES**  
Cannes

**HERITIÈRES**  
Cannes

**MY FATHER**  
Cannes

**REVOLUTION'S DAUGHTER**  
Cannes

**50th**  
Cannes

**RETURN TO A STRANGE LAND**  
Cannes

**FROM WHERE I'M LOOKING**  
Cannes

**THE LIFE WE LEAVE**  
Cannes

**THE LIFE WE LEAVE**  
Cannes

**AU BAIN DES DAMES**  
Cannes

**REPLICA**  
WHO DOES LOVE MEET BE HANDED  
Cannes

**SOLE**  
Cannes

**GOOD KUNST**  
THE KUNST COLLECT  
Cannes

**LOVE BIRDS**  
Cannes

**MONSTER SLAYER**  
Cannes

**MONSTER SLAYER**  
Cannes

**GLORIA**  
Cannes

**FLASHES IN THE REALM OF CAVES**  
Cannes

**STOATS' LAST STAND**  
Cannes

**MEMORIES IN A WINDOW**  
Cannes

**REMAATHAU**  
Cannes

**THE PLACE WHERE MEMORIES HIDE**  
Cannes

**DANCE FOR YOUR LIFE**  
Cannes

**DANCE FOR YOUR LIFE**  
Cannes

**KIKUYU LAND**  
Cannes

**THE PLACE WHERE MEMORIES HIDE**  
Cannes

**MOLLY VS THE MACHINES**  
Cannes

**TUNERS**  
Cannes

# WORLD PRESS PHOTO & DOC EDGE IMMERSIVE EXHIBITION

## Two World-Class Exhibitions. One Extraordinary Experience.

For the first time in Aotearoa New Zealand, two world-class documentary platforms come together under one roof. The World Press Photo Exhibition, one of the most respected showcases of photojournalism on the planet, presents the work of 42 awarded photographers selected from over 57,000 entries across 141 countries.

Alongside it, the Doc Edge Immersive Exhibition invites you to step beyond the photograph and inside the story, through virtual reality, interactive installation, and sensory-driven experiences.

Together they create a journey from seeing to feeling, from bearing witness to becoming part of the story.

Presented by **Doc Edge** and the **Rotary Club of Auckland**, this is the largest exhibition of its kind in the Asia-Pacific.

# World Press Photo Exhibition returns for 2026 with an exciting collaboration...

World Press Photo, brought to you by the Rotary Club of Auckland, is excited to return in 2026 with an exciting new collaboration.

In a historic first, we are merging the much-loved photo exhibition with the Doc Edge Immersive Exhibition, to create the largest event of its kind in Asia-Pacific.

Returning to the iconic Smith & Caughey building, you'll get to see the world-class photojournalism you have come to expect, since 2010.

World Press Photo 2026 offers a powerful immersion into the most significant events of the past year through the lens of the world's premier photojournalists.



**Farīsāt: Gunpowder's Daughters by Chantal Pinzi**



**Aid Emergency in Gaza by Saber Nuraldin**



**Portland Protests ICE by Jan Sonnenmair**



**Drone Wars by David Guttenfelder**

The event features 42 awarded photography projects selected by a global jury, ranging from urgent breaking news and broad international perspectives to intimate, overlooked personal stories. From the high-stakes imagery of the 2026 World Press Photo contest winners to deep-dive educational stories, the collection serves as a visual testament to the power of independent journalism in inspiring global action.

With a diverse collection of images covering the environment, social reform, and human resilience, the photography is designed to make audiences stop, feel, and think.

The exhibition is brought to Auckland each year as a fundraiser for charity. This year profits will go to The Auckland City Mission.



# IMMERSIVE PROJECTS

This year's immersive programme is presented across five thematic stages — Witness  $\Rightarrow$  Feeling, Presence  $\Rightarrow$  Participation, Attention  $\Rightarrow$  Action, Resonance  $\Rightarrow$  Healing, and Dreams  $\Rightarrow$  Transformation — each gathering works around a shared emotional and experiential journey. Twelve projects. Five invitations to step inside the story.

## Resonance $\Rightarrow$ Healing

Audiences are invited to move through human perseverance across landscapes of memory, loss, and quiet ceremony until what was carried alone is briefly carried together.



### A Long Goodbye

New Zealand Premiere

Kate Voet, Victor Maes | 2025  
Belgium, Luxembourg, Netherlands

An animated, interactive VR experience that places you in the body of Ida, a 72-year-old pianist living with dementia. As you handle objects and play her husband Daniel's tape recordings, her fading apartment slowly draws itself back into colour—memory by memory, love letter by love letter.



### Mirage

Australasia Premiere

Naima Karim | 2025  
Bangladesh, Netherlands, Saudi Arabia

An interactive VR work that places you inside the mind of a young girl living with depression and anxiety. Set in a stylised desert landscape, with a haptic vest and hand-tracking interactivity, the work asks audiences not to observe her struggle, but to walk through it with her.

World Premiere

## Music and the Mystical Experience (Immersive)

Michael Sutherland, Isabel Corfiatis  
2026 | New Zealand

A walkthrough of what it feels like to experience the music from the Music and the Mystical Experience album in a fully immersive, multi-room environment — where sound, art, meditation and ceremony unfold. Audiences enter, move through, and leave changed.

*Companion film in the Doc Edge Festival programme*



## Attention ⇒ Action

Where looking carries consequence. A child's gaze keeps a fragile world alive, 12,000 years of human and planetary data resolve into sound. These two projects make attention itself the instrument as a call to action.

New Zealand Premiere

## Anthropocene In C Major

Jamie Perera | 2022 | UK

An immersive audiovisual experience that turns 12,000 years of climate and human data into sound. Across 45 minutes, we travel from the invention of the wheel to the present, hearing what our species has built, and what we have done to the planet and to each other.



Asia Pacific Premiere

## Poems of Life (心靈永動機)

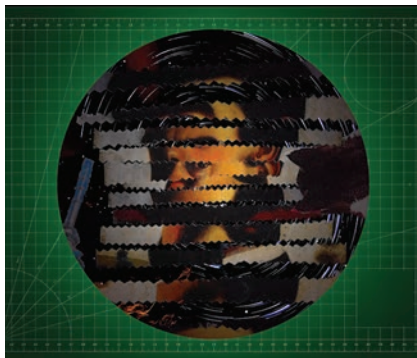
De Chuen Wu | 2025 | Taiwan

This VR experience follows a tin boy who meets a colourful bird in a ruined world and helps it return home while evading hunters. With paper-style visuals and eye-tracking interaction, players awaken a silent forest, but also attract hidden threats. Gaze becomes both shield and weapon, until its power overwhelms where a new beginning awaits.



# Dreams ⇌ Transformation

Live ritual, collective movement, and acts of cultural reimagining push past the present toward what might come next. Not escape, but transformation, imagining new states with full knowledge of what is broken.



## Between Life and Death

World Premiere

Juan Nicolas Urquiza, Ash Raymond James Hebe Kearney | 2026 | Argentina, New Zealand

An experimental audiovisual album of abstract sound, cinematic textures and electronic minimalism. A live installation, where electronic music, spoken word poetry and real-time visuals unfold as a sensory ritual of memory, contrast and immersive atmosphere



## BrainRot Revolution

Asia Pacific Premiere

Mike Wozniowski, Brett Gaylor | 2025 | Canada

A large-screen, body-controlled game in which dancing accelerates the collapse of the internet. The more you move, the faster the model breaks. A satirical, joyful piece of culture jamming that asks what we might build from the rubble of the platforms we have grown sick of.



# Witness ⇌ Feeling

The boundary where attention becomes empathy. The projects place audiences inside other lives - a flooded home, a remembered kitchen, a forest that no longer stands. They ask not just for understanding, but for the willingness to be moved.

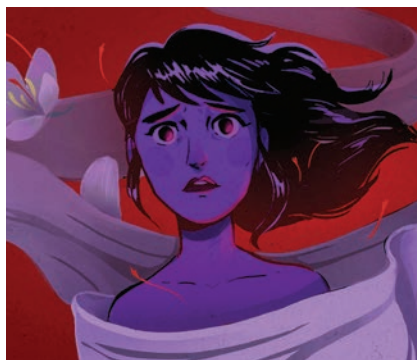


## Desiderium: What Stood Here

World Premiere

Ellie Adams | 2026 | New Zealand

A resin-cast tōtara stump, practical lighting, and augmented reality combine to make visible one of the most significant and most overlooked environmental losses in Te Waipounamu / South Island. The forest that was here returns, briefly, around the stump that remains.



## Less Than 5gr of Saffron

Australasia Premiere

Négar Motevalymeidanshah | 2025 | France

Golnaz, a 23-year-old Iranian immigrant in Germany, opens a pack of saffron and the smell carries her home. As she cooks rice from memory, the kitchen begins to dissolve into something else: the boat, the water, the family she lost three years ago.



## The World Came Flooding In

New Zealand Premiere

Van Sowerwine, Isobel Knowles | 2025  
Australia

A house is never the same after a river runs through it. This is a powerful VR documentary and immersive installation where lost objects and spaces are recreated in collaboration with people affected by the 2022 floods in eastern Australia.

# Presence ⇒ Participation

The audience is invited to stop watching and start belonging. Bodies enter the work, light finds them, gestures become part of the Exhibitions' evolving record. Here, presence is not passive. It leaves a mark on what comes next.

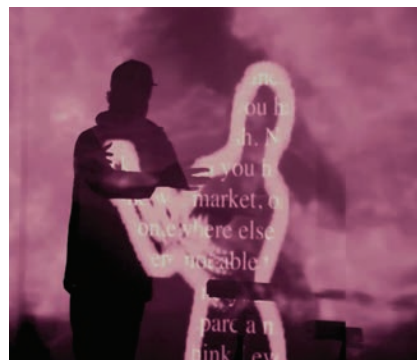


## Lumina

World Premiere

Serena Stevenson | 2026 | New Zealand

A projection and dance work by Serena Stevenson and DJ Lisa Greenfield, drawing on documentary footage from across Asia, Africa, Europe, the Pacific, and Aotearoa. A dancer in white becomes a moving canvas of faces and stories. Audiences step into the light, and the projections find them too.



## Playground: Waitematā

World Premiere

Darryl Chin, Kyung Ho Min  
2026 | New Zealand

An open digital studio and evolving public artwork by Studio Auspicious. Across the Exhibition, audiences contribute images, gestures and conversations to a growing digital collage of the city during a moment in time. The work accumulates, shifts, and responds to the people moving through it.



rnzb

16 Jul–1 Aug  
Wellington, Auckland  
and Christchurch

# Royal New Zealand Ballet

## Winter Season

In association with Viking



Three timeless ballets

### Birthday Offering

Frederick Ashton

Music by Glazunov arr: Robert Irving

### Ultra Folly

Sarah Foster-Sproull

Music by Cabezon, Falconieri, various Anon.

### Stand to Reason

Andrea Schermoly

Music by Beethoven, Marais, von Westhoff

IN ASSOCIATION WITH



Supported by



National touring partner

ASHTON  
WORLDWIDE 2024-2028

Part of

Book now  
[rnzb.org.nz](http://rnzb.org.nz)

**BIRTHDAY OFFERING** / **Choreography** Frederick Ashton **Music** Glazunov arr: Robert Irving **Costume design** Kenneth Rowell **Guest répétiteurs** Laura Morera and Mark Kay. **ULTRA FOLLY** / **Choreography** Sarah Foster-Sproull **Music** Cabezon, Falconieri, various Anon. **Costume design** Donna Jefferis **Lighting design** Dan Wilson. **STAND TO REASON** / **Choreography** Andrea Schermoly **Music** Beethoven, Marais, von Westhoff **Costume design** Donna Jefferis and Esther Lofley **Lighting design** Andrew Lees **Projection design** Will Funk.

Soloist Jemima Scott. Photograph by Ross Brown.

# DOC EDGE INDUSTRY



Doc Edge Industry is New Zealand's premier professional event for the documentary screen sector, held at the heart of the Doc Edge Festival.

**29 June – 1 July 2026 | Grand Millennium Auckland**

## Beyond the Algorithm

Kia whakatōmuri te haere whakamua — Walking backwards into the future with our eyes fixed on the past.

The 2026 theme, **Beyond the Algorithm**, reflects a screen industry navigating profound transformation. Audience behaviours are evolving rapidly, funding pressures are intensifying, and new technologies are reshaping storytelling, visibility, and engagement itself. Beyond the Algorithm is a call to examine the forces shaping contemporary screen culture while reaffirming courageous storytelling, creative independence, and authentic human connection.

Over three days, Doc Edge Industry brings together talks, masterclasses, pitching sessions, and industry meetings designed to support documentary storytelling and connect projects, people, and partners across the global screen industry.

*The full programme, speakers and international guests will be announced in June 2026. For more information and to register, visit [docedge.nz/industry](https://docedge.nz/industry).*

### Forum

Learn, connect, and exchange ideas through talks, masterclasses and panels with leading local and international speakers.

### Pitch

Selected filmmakers present projects in development to funders, broadcasters and industry experts.

### Market

A curated online market connecting films with distributors, broadcasters and festival programmers. Access is by invitation.

### Who Should Attend?

Documentary filmmakers, producers, broadcasters, distributors, festival programmers, screen professionals, students, and emerging storytellers.

### Passes

Doc Edge Industry is a single three-day pass, providing full access to all events across the programme.

It includes all talks, pitching sessions, panels and masterclasses; daily catering; networking opportunities; and discounted tickets to the Doc Edge Awards and Festival screenings.

**Industry \$299 | General \$349  
Student \$149**

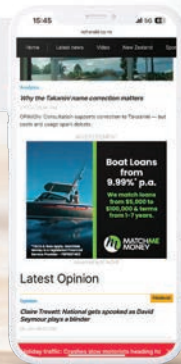
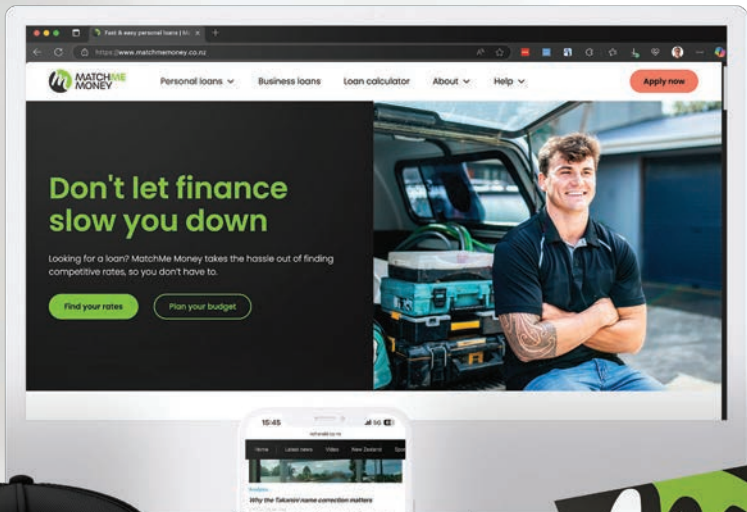
# FROM CONCEPT TO REALITY.

We offer it all in one place, from creative conceptualisation and content development to production and deployment. We give our clients excellent outcomes with minimal fuss.



Get in touch with James, to discuss your creative and printing needs with SCG.

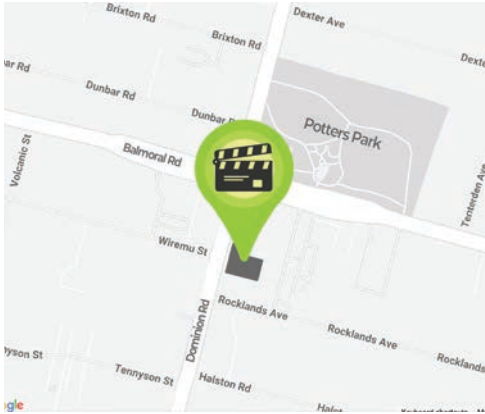
+64 21 533 954 | james.timpson@scg.net.nz | scg.net.nz



scg.net.nz

**SCG**  
Brand Better

# Auckland Venues



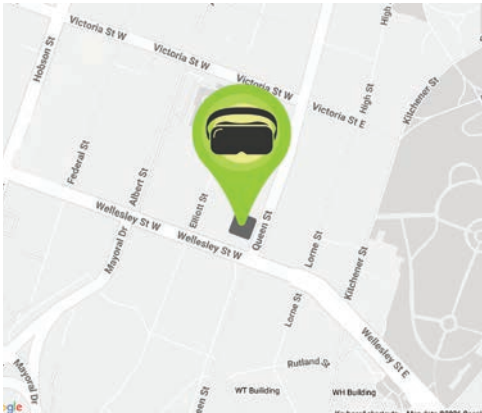
**610 Dominion Rd  
Balmoral, Auckland**

## The Capitol Cinema

Built in 1922, Balmoral's heritage-listed Capitol is Auckland's second oldest cinema. Renovated most recently in 2009, the cosy 132-seat cinema is plush with large comfortable seating and original decor.

The Capitol screens the best in new release arthouse films together with upmarket commercial releases, regular special film events and festivals. The cinema is licensed and supports local wines, craft beers, a selection of imported brands, six different types of gin and a range of sodas and tonic water. The candy bar also offers hand-rolled, organic Little Island ice creams.

*Note: The Capitol Cinema is not wheelchair accessible*

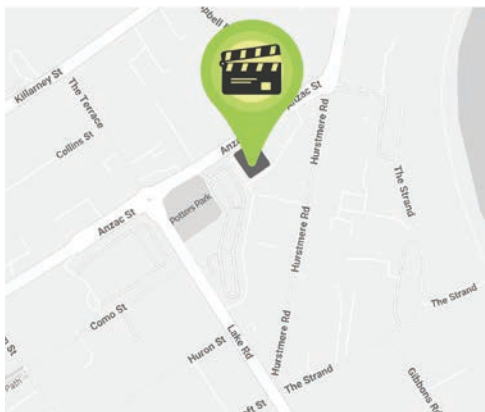


**11 Wellesley St West  
(Corner of Wellesley St and Elliot St)  
Auckland CBD, Auckland**

## Smith & Caughey's

Step inside one of New Zealand's oldest retail spaces. Established in 1880 by Marianne Smith as a drapers and millinery shop, 11 Wellesley Street West is known by most Aucklanders as the beloved home of Smith & Caughey's. Since the business' closure in 2025, this Category 1 heritage building has found new life hosting activations and events.

*Home of the Festival Hub and World Press Photo & Doc Edge Immersive Exhibition*

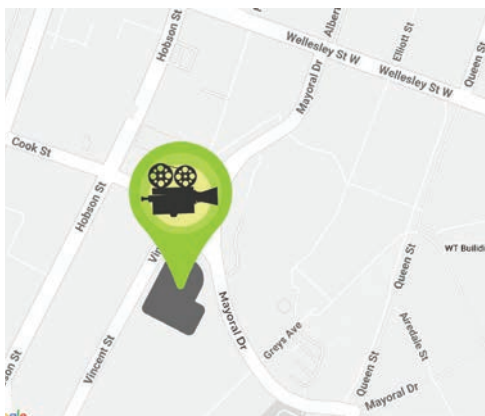


**34 Anzac St  
Takapuna, Auckland**

## Takapuna Beachside Cinemas

For over 100 years, the “Big Blue Building” at 34 Anzac Street has been an icon of the North Shore. Recently refurbished to offer an elite movie-going experience, Takapuna Beachside Cinemas feature plush double couches, cosy blankets and an intimate atmosphere. Just steps from Takapuna Beach, the cinema pairs the latest blockbusters and arthouse films with hand-crafted pizzas, local craft beer, and fine NZ wine.

*This is the first year that Takapuna Beachside Cinemas will host Doc Edge Festival.*



**71 Mayoral Dr, Cnr Vincent St  
Auckland CBD, Auckland**

## Grand Millennium Auckland

Grand Millennium Auckland is centrally located close to Queen Street and Viaduct Harbour with restaurants and shops on its doorstep making it the ideal place to relax and attend screenings with most convenience.

*Home of the Doc Edge Industry Event and Awards*

DOC EDGE FESTIVAL

# GRAND, BY DESIGN

A proud partnership with Grand Millennium Auckland

Welcome to Grand Millennium Auckland, an iconic 5-star Qualmark-graded hotel that combines timeless elegance with modern comfort in the heart of Auckland.

Featuring the city's largest rooms with true king-sized beds, complete with deluxe bathrooms and stunning views of Auckland's vibrant skyline, the hotel offers an unmatched stay. Guests can enjoy a wide range of premium amenities, including ample on-site parking spaces, an exclusive adults-only Club Lounge, an indoor pool and outdoor deck, a fully equipped business service centre, electric vehicle charging stations, and unlimited Wi-Fi.

Explore the culinary delights within our Grand Dining Precinct, home to renowned restaurants Katsura, Ember, The Aviary, and Estelle's, led by Executive Chef James Kenny, who brings his passion for seasonal produce to every dish.

The Les Clefs d'Or Concierge Team is at your service to offer personalised recommendations and assist with booking local events and activities, ensuring your stay is seamless and memorable.

Located just 30–45 minutes from Auckland Airport by taxi, with convenient public transport links and an on-site taxi rank, the hotel provides unmatched accessibility.

Whether you're visiting for business or pleasure, Grand Millennium Auckland promises an unforgettable experience filled with grand comfort, breathtaking views, and exceptional service.



GRAND  
MILLENNIUM  
AUCKLAND

P +64 9 366 3000

E [grandmillennium.auckland@millenniumhotels.co.nz](mailto:grandmillennium.auckland@millenniumhotels.co.nz)

[www.millenniumhotels.com](http://www.millenniumhotels.com)

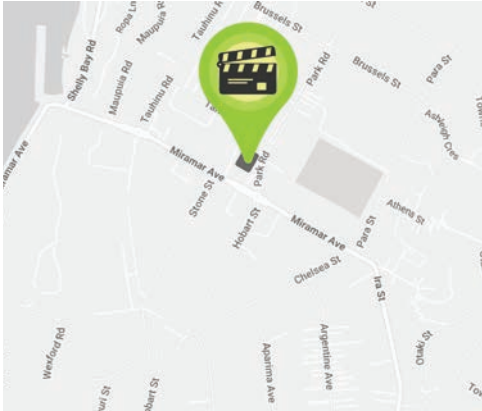
Follow us:  Grand Millennium Auckland

71 MAYORAL DRIVE, AUCKLAND CENTRAL

EXPERIENCE SOMETHING

TRULY GRAND

# Wellington Venue



5 Park Rd  
Miramar, Wellington

## The Roxy Cinema

Nestled in the heart of New Zealand's movie-making capital, Miramar, Wellington, this gorgeous art deco cinema theatre, multi-arts venue and restaurant, is one of the city's leading attractions.

This versatile multi-arts venue now boasts state of the art sound design and projection technology, two luxurious theatres (capacity 164 & 55), generous Italian leather seats and the ability to enjoy wine and snacks while you watch, making this a very special film experience.



**Let's keep care close to home.**

To find your nearest locally-owned veterinary clinic, go to [indievets.co.nz](http://indievets.co.nz)



**IndieVets™**  
Local vets for local pets



**We're here to help you tell your stories.**

Support is available for permissions, finding talented crew and access to epic landscapes and unforgettable backdrops.

Get in touch and we'll connect you to people, places and opportunities.

 Ōtautahi  
Christchurch

 screen  
canterbury<sup>nz</sup>

## Doc Edge — A Charity Powered by Your Support

Doc Edge (Charity #CC54892) is a registered New Zealand charity. Everything we do: the Festival, the Immersive Exhibition, the Schools Programme, the Industry events, and the work we do year-round to champion documentary storytelling is made possible through the generosity of our audiences, funders, sponsors and supporters.

When you buy a ticket, attend an event, or simply share what you love about Doc Edge with others, you are doing more than enjoying great documentary. You are helping sustain an organisation that exists to give filmmakers a platform, audiences a window to the world, and Aotearoa New Zealand a space for storytelling that matters.


In a media landscape where, independent voices are increasingly under pressure, organisations like Doc Edge matter more than ever. We have spent 21 years building a home for documentary in our country, and we need your help to keep it growing.

Every contribution, no matter the size, makes a real difference. If Doc Edge has moved you, challenged you, or shown you something you would not otherwise have seen, please consider giving something back.


Donate at [docedge.nz](https://docedge.nz) - click on the **Donate** button at the upper right corner.

To find out about becoming a Doc Edge Patron and the benefits available, see below.

Become a Doc Edge  
**Guardian / Kaitiaki**



SCAN HERE to protect  
the Art of Documentary



PURPLE FLAG ACCREDITED PRECINCT

AUCKLANDS INTERNATIONAL  
PRECINCT

★ **DOMINION** ★  
**ROAD**

A WORLD WITHIN A STREET

---

**DOMINION**

**ROAD**

*Auckland's International Dining Precinct*

World cuisines. One iconic street.  
Open late. Safe nights guaranteed.

[dominionrd.co.nz](https://dominionrd.co.nz)

# Team 2026

---

Executive Director: **Dan Shan**  
Director: **Alex Lee**  
Festival Producer: **Hunter Weeks**  
Impact & Operations Lead: **Christian Jensen**  
Creatives & Community Lead: **Jarrold Dobell**  
Web and Digital Marketing Lead: **John Lau**  
Ticketing & Customer Service: **Rachel Pugh**  
Hospitality & Guest Experience / Manaakitanga: **Louisa Tipene Opetaita**  
Design Intern: **Haley Mcauliffe**  
AV Editor Interns: **Jayden Wee, Marc Mansfield**  
Wellington Coordinator: **Colleen Restieaux**  
Wellington Ticketing & Customer Service: **Emma Fryer**  
Media & PR: **Elephant Publicity - Michelle Lafferty, Ali Nicoll van Leeuwen, Stephanie Butler**  
French Focus: **Alice Cagnat, Blandine Massiet du Biest**  
Photography: **Deane Cohen**

Screening Support: **Aaron Cluka, Anna Blake, Anne Marie Brook, Barbara Wheeler, Bernadette Casey, Blandine Massiet du Biest, Bruce Foster, Chen Chen, Jasmine Herlt, Margaret Henley, Moira Powell, Rachael Penman, Rowan Wernham, Sacha Handsaker, Selena Francisco, Serena Stevenson**

Board of Trustees:  
**Matthew Metcalfe (Chair)**  
**Cameron McGregor**  
**Nathan Hoturoa Gray**  
**Sarah Stuart**  
**Alex Lee**  
**Dan Shan**

Ambassadors:  
**Judy Bailey**  
**Neil Waka**

Legal Advisor:  
**David Bigio Q.C.**

**A big thank you to all the other supporters throughout the year.**

Doc Edge Charity #CC54892  
Private Bag 92066 | Victoria Street  
West | Auckland 1142 | 09 360 0329



# Index

## 0-9

58th 14

## A

A Long Goodbye 64  
The Art of Adventure 30  
A War on Women 26  
American Doctor 22  
Anthropocene In C Major 65

## B

The Baker's Hotline 53  
Between Life and Death 66  
The Bookstore That Never Sleeps 54  
BrainRot Revolution 66

## C

Cagnat, Drawing or Nothing  
(Cagnat, le dessin sinon rien) 38  
Cambodian Beer Dreams 10  
Ceremony 34  
Chicken Ghetto 57  
Chilapa Girl (Niña Chilapa) 59  
Coexistence, My Ass! 27  
Collapse (Effondrement) 39

## D

Dance For Your Life 18  
Desiderium: What Stood Here 67  
Digital Traditions: Kastom Keeper 59

## E

Elon Musk Unveiled – The Tesla Experiment 11  
Ember 55  
The Essence of Eva 19

## F

featherStrength (Feather Strength) 23  
Finding Honk 15  
First Cuts are the Deepest  
(बाटलेकडेबल्ल) 31  
Flashes in the Realm of Caves 59  
For Life 27  
Free Fish (أفخ كمامس) 56  
Frost Without Snow and Ice 31

## G

Girls' Flight Out 57  
Gloria 52  
Good Kunst 53

## H

Half Moon 19  
Hunter's Moon 56

## I

If You Don't Like It, Look Away  
(Au bain des dames) 60  
In the Path of Giants 32  
Inside Gaza 39

## J

Jacqueline Fahey: From Where I'm Looking 58

## K

Kabul, Between Prayers 32  
Kikuyu Land 12  
Kings of Venice 23

## L

Legacy (Héritières) 20  
Less than 5gr of Saffron 67  
Let Our Mountains Live (La Fjella Leve) 12  
The Life We Leave 15  
The Lives of My Father 11  
Love Birds 58  
Loving Karma 33  
Lumina 68

## M

Mar Musa 33  
Memories of a Window 55  
Mirage 64  
Modern Whore 16  
Molly vs The Machines 16  
Monster Slayer 60  
Music and the Mystical  
Experience (Film) 20  
Music and the Mystical  
Experience (Immersive) 65

## N

NZ Wars: Stories of Waerenga-a-Hika 40

## P

The Place Where Memories Hide 57  
Playground: Waitemata 68  
Poems of Life (心靈永動機) 65

## R

Race Be Run 56  
Ranginui: Call of the Ice 35  
Redlight to Limelight 28  
Remathau: People of the Ocean 35  
Replica 17  
Return to the Strange Land 21  
The Revolution Against Death 52  
Revolution's Daughter 28

## S

Seized 13  
Sole (ஸ) 54  
Stoats' Last Stand 58  
Student Army (紅旗下的蛋) 55  
Sukundimi Walks Before Me 36

## T

The Trial of Alec Baldwin 13  
The Tuners (Stroiciele) 54  
There's a Hole in My Bucket 24  
Tied with the Tides 60  
Tough Old Broads (Dures à cuire) 29

## W

The War Below: Restoring Hope in the  
Solomon Islands 36  
The Weight of the World 53  
The Werewolf in the Wave 24  
The World Came Flooding In 67

## U

Unlikely Kin 37

## Y

Yanuni 29  
Yo (Love is a Rebellious Bird) 21

THE  
NOTHING IS  
IMPOSSIBLE®  
COMPANY

PROUDLY  
BACKING  
*THE STORIES*  
TOO REAL  
FOR THE  
ALGO—RITHM

SAATCHI & SAATCHI

# **TĀMAKI MAKĀURAU AUCKLAND** **24 JUNE — 12 JULY**

**INCLUDING: WORLD PRESS PHOTO & DOC EDGE IMMERSIVE EXHIBITION.  
UNITING GLOBAL PHOTOJOURNALISM AND IMMERSIVE STORYTELLING  
FOR THE FIRST TIME IN AOTEAROA.**

**INDUSTRY & AWARDS**  
29 JUNE - 1 JULY

# **PŌNEKE WELLINGTON** **15 JULY — 26 JULY**

# **ŌTAUTAHI CHRISTCHURCH** **31 JULY — 2 AUGUST**

# **AOTEAROA NATIONWIDE** **27 JULY — 10 AUGUST**

**TICKETS AT [DOCEDGE.NZ](https://docedge.nz)**

